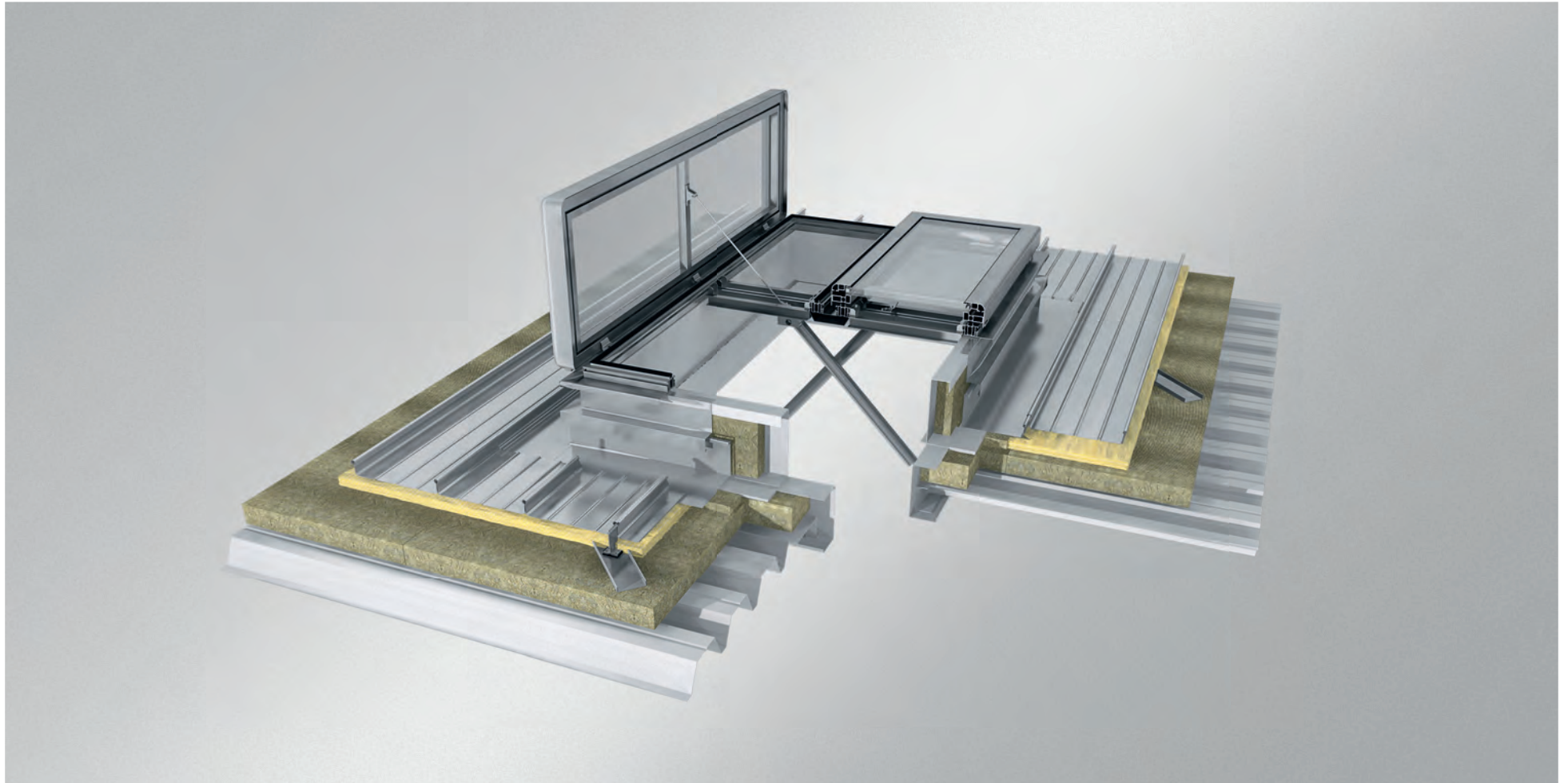

SKYLIGHT CONNECTION



BEMO EDGE TRIM

BEMO CONNECTION PROFILE IN ACCORDANCE WITH STRUCTURAL REQUIREMENTS AND WELDED WITH STANDING SEAM PROFILE

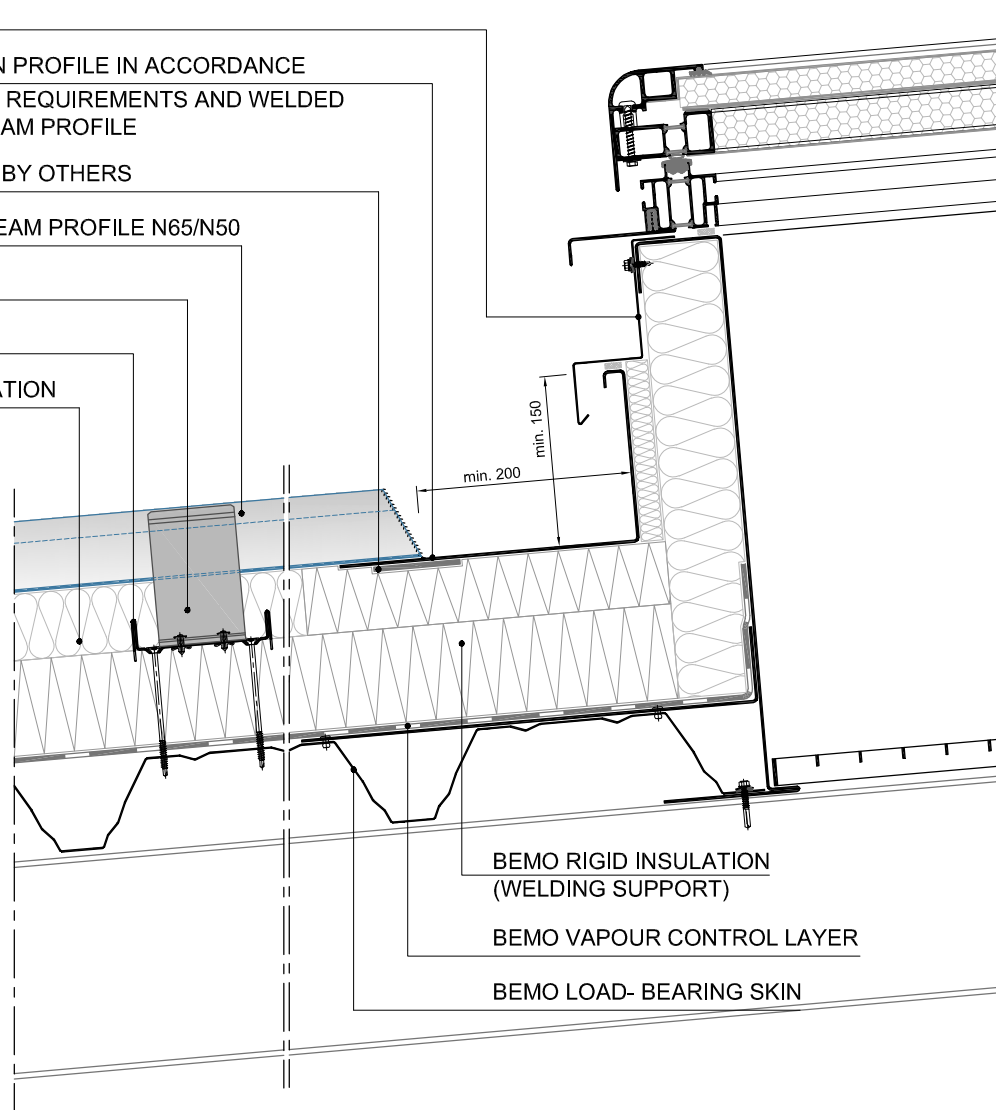
HEAT CONDUCTOR BY OTHERS

BEMO STANDING SEAM PROFILE N65/N50

BEMO HALTER

BEMO-COMBI BAR

BEMO SOFT INSULATION



- EXPANSION BANDS TO BE INSTALLED WHEN REQUIRED

DRAWING TITLE:

**CONNECTION TO CURB
STRUCTURAL DECK (TRANSVERSE)**

TYPE:

LONGITUDINAL SECTION

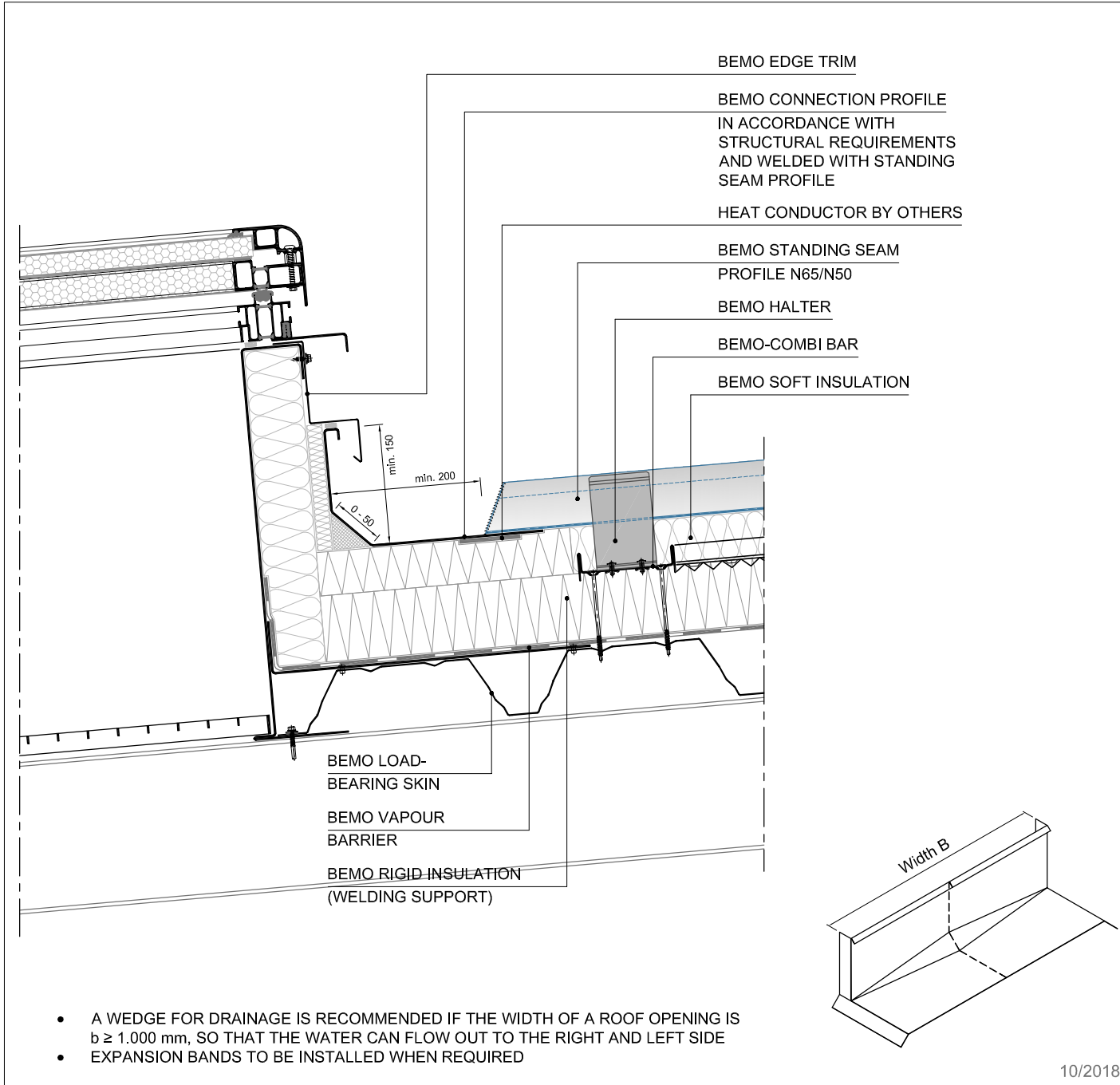
TYPICAL DETAIL

1701d

BEMO Systems GmbH
Max-Eyth-Straße 2
D-74532 Ilshofen-Eckartshausen
Germany

T: +49(0)7904 29899-60
F: +49(0)7904 29899-61
E: sales@bemo.com
W: www.bemo.com

This drawing is the exclusive property of BEMO Systems GmbH. It may not be duplicated or made accessible to third parties without our prior consent. We reserve all rights, including in the case of granting a patent or granting a utility model. The illustrated construction details are non-binding solution proposals, in detail must be checked for applicability and accuracy for each project.



DRAWING TITLE:

**CONNECTION TO CURB
STRUCTURAL DECK (TRANSVERSE)**

TYPE:

LONGITUDINAL SECTION

TYPICAL DETAIL

1702d

BEMO Systems GmbH
Max-Eyth-Straße 2
D-74532 Ilshofen-Eckartshausen
Germany

T: +49(0)7904 29899-60
F: +49(0)7904 29899-61
E: sales@bemo.com
W: www.bemo.com

This drawing is the exclusive property of BEMO Systems GmbH. It may not be duplicated or made accessible to third parties without our prior consent. We reserve all rights, including in the case of granting a patent or granting a utility model. The illustrated construction details are non-binding solution proposals, in detail must be checked for applicability and accuracy for each project.

BEMO EDGE TRIM

BEMO STANDING SEAM PROFILE
(FOLDED)

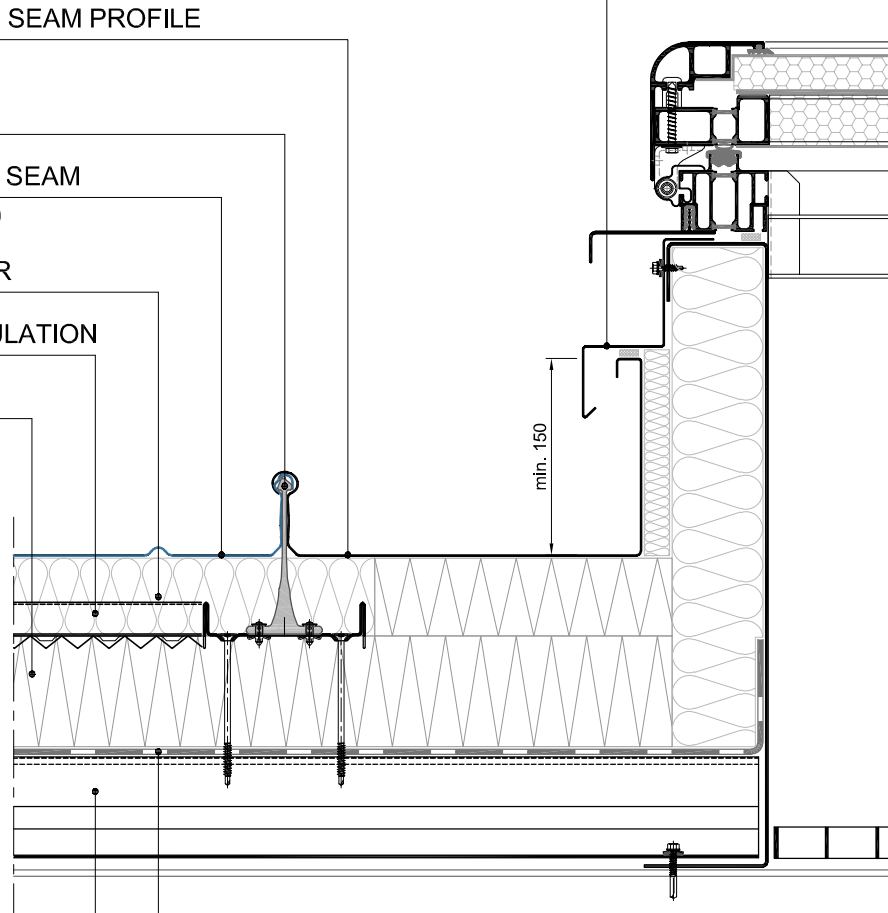
BEMO HALTER

BEMO STANDING SEAM
PROFILE N65/N50

BEMO-COMBI BAR

BEMO SOFT INSULATION

BEMO RIGID
INSULATION



BEMO LOAD-
BEARING SKIN

BEMO VAPOUR
CONTROL LAYER

DRAWING TITLE:

**LATERAL CONNECTION TO CURB
STRUCTURAL DECK (TRANSVERSE)**

TYPE:

CROSS SECTION

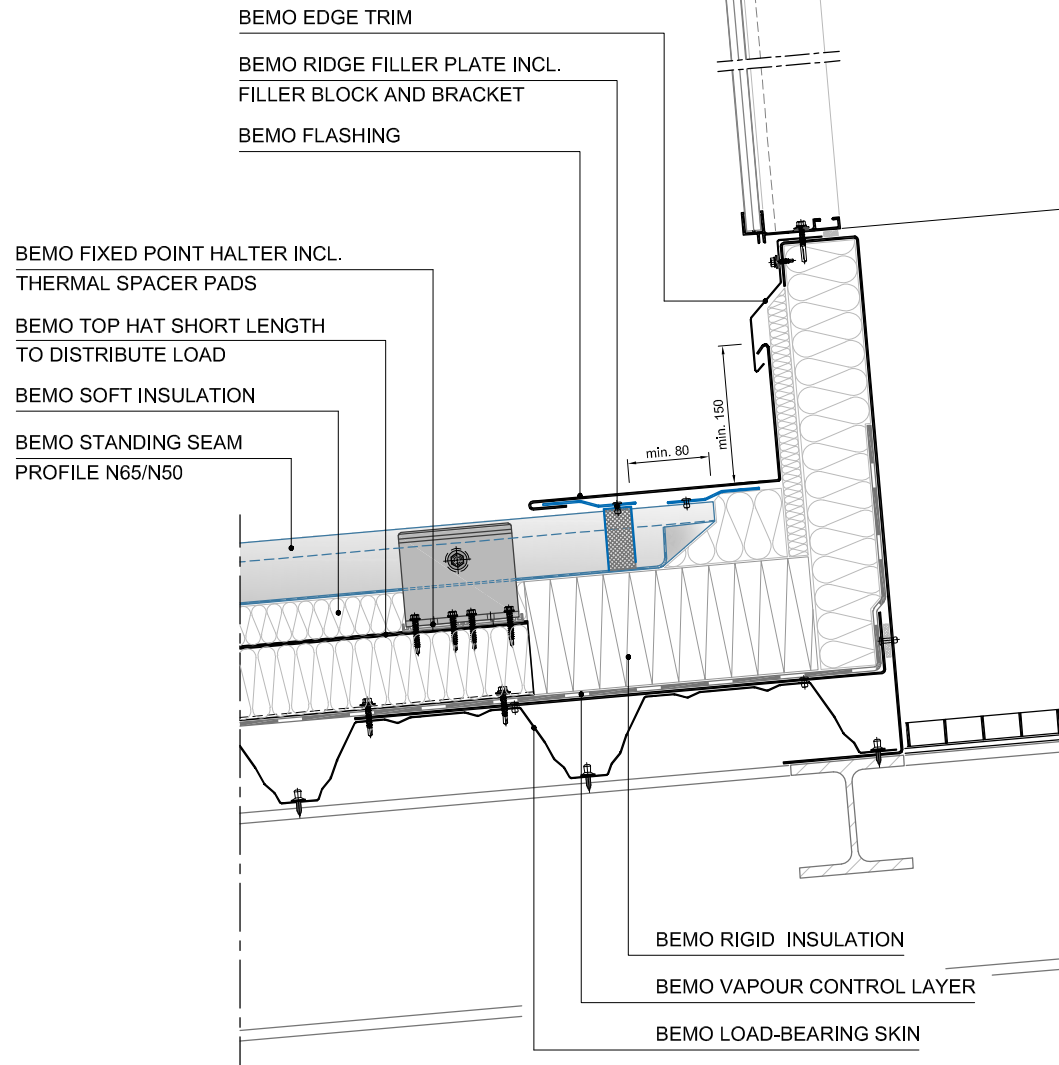
TYPICAL DETAIL

1703d

BEMO Systems GmbH
Max-Eyth-Straße 2
D-74532 Ilshofen-Eckartshausen
Germany

T: +49(0)7904 29899-60
F: +49(0)7904 29899-61
E: sales@bemo.com
W: www.bemo.com

This drawing is the exclusive property of BEMO Systems GmbH. It may not be duplicated or made accessible to third parties without our prior consent. We reserve all rights, including in the case of granting a patent or granting a utility model. The illustrated construction details are non-binding solution proposals, in detail must be checked for applicability and accuracy for each project.



DRAWING TITLE:

**CONNECTION TO SKYLIGHT CURB
STRUCTURAL DECK (TRANSVERSE)**

TYPE:

LONGITUDINAL SECTION

TYPICAL DETAIL

1704d

BEMO Systems GmbH
Max-Eyth-Straße 2
D-74532 Ilshofen-Eckartshausen
Germany

T: +49(0)7904 29899-60
F: +49(0)7904 29899-61
E: sales@bemo.com
W: www.bemo.com

This drawing is the exclusive property of BEMO Systems GmbH. It may not be duplicated or made accessible to third parties without our prior consent. We reserve all rights, including in the case of granting a patent or granting a utility model. The illustrated construction details are non-binding solution proposals, in detail must be checked for applicability and accuracy for each project.

BEMO EDGE TRIM

BEMO STANDING SEAM PROFILE
(FOLDED)

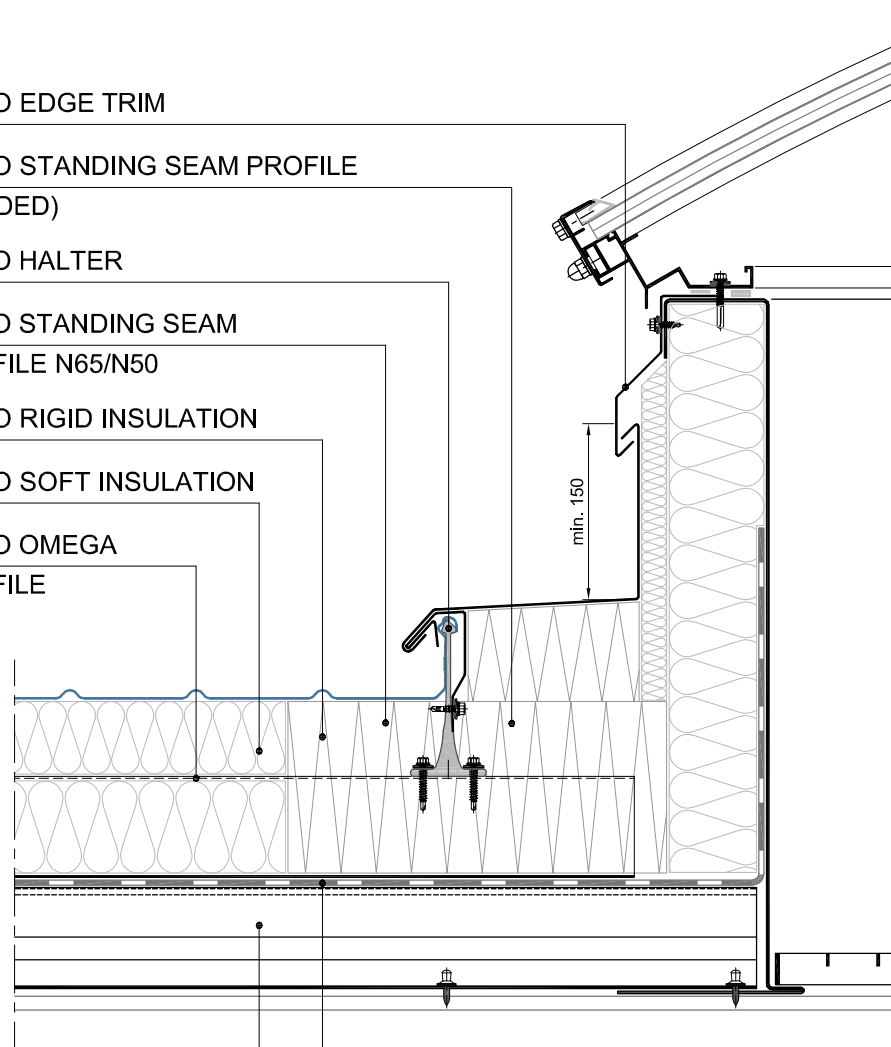
BEMO HALTER

BEMO STANDING SEAM
PROFILE N65/N50

BEMO RIGID INSULATION

BEMO SOFT INSULATION

BEMO OMEGA
PROFILE



BEMO LOAD-
BEARING SKIN

BEMO VAPOUR
CONTROL LAYER

min. 150

DRAWING TITLE:

**CONNECTION TO SKYLIGHT CURB
STRUCTURAL DECK (TRANSVERSE)**

TYPE:

CROSS SECTION

TYPICAL DETAIL

1705c

- THIS DETAIL IS ALLOWED FOR MIN. SLOPE > 3°

10/2018

BEMO Systems GmbH
Max-Eyth-Straße 2
D-74532 Ilshofen-Eckartshausen
Germany

T: +49(0)7904 29899-60
F: +49(0)7904 29899-61
E: sales@bemo.com
W: www.bemo.com

This drawing is the exclusive property of BEMO Systems GmbH. It may not be duplicated or made accessible to third parties without our prior consent. We reserve all rights, including in the case of granting a patent or granting a utility model. The illustrated construction details are non-binding solution proposals, in detail must be checked for applicability and accuracy for each project.

BEMO EDGE TRIM

BEMO CONNECTION PROFILE IN ACCORDANCE
WITH STRUCTURAL REQUIREMENTS AND WELDED
WITH STANDING SEAM PROFILE

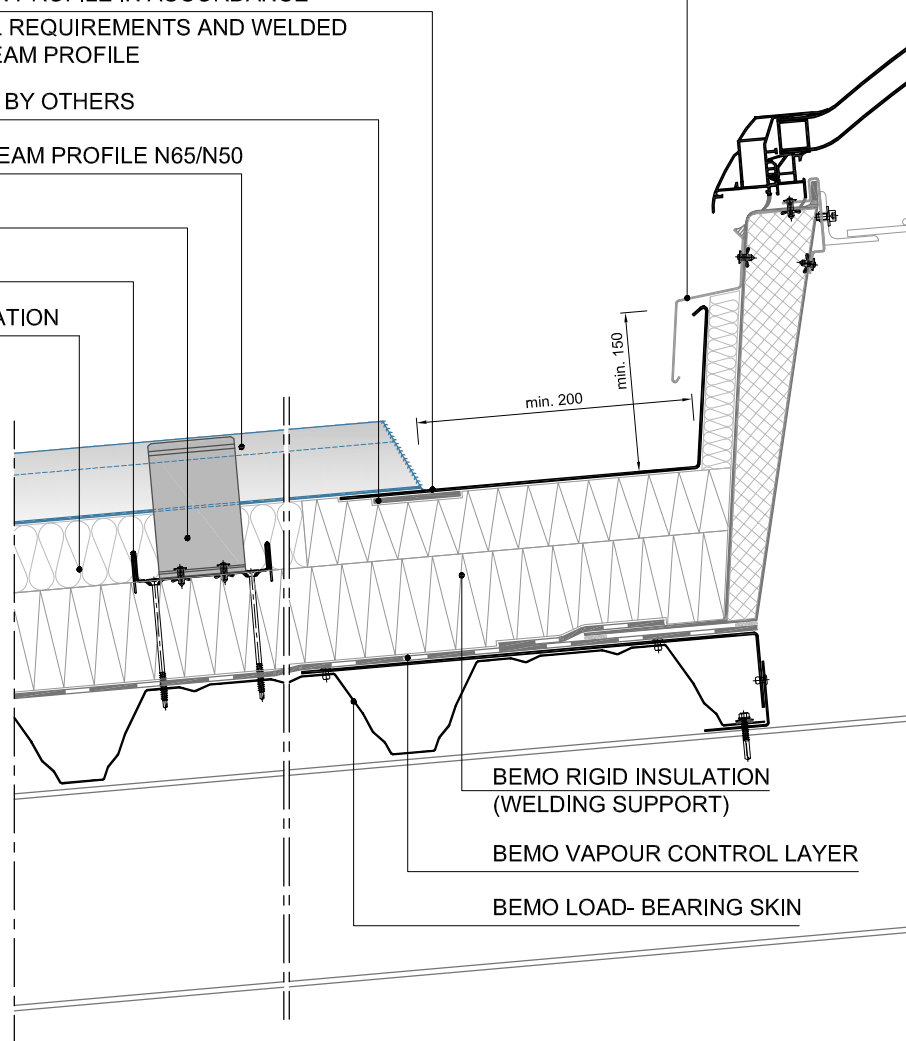
HEAT CONDUCTOR BY OTHERS

BEMO STANDING SEAM PROFILE N65/N50

BEMO HALTER

BEMO-COMBI BAR

BEMO SOFT INSULATION



- EXPANSION BANDS TO BE INSTALLED WHEN REQUIRED

DRAWING TITLE:

**CONNECTION TO CURB
STRUCTURAL DECK (TRANSVERSE)**

TYPE:

LONGITUDINAL SECTION

TYPICAL DETAIL

1720

BEMO Systems GmbH
Max-Eyth-Straße 2
D-74532 Ilshofen-Eckartshausen
Germany

T: +49(0)7904 29899-60
F: +49(0)7904 29899-61
E: sales@bemo.com
W: www.bemo.com

This drawing is the exclusive property of BEMO Systems GmbH. It may not be duplicated or made accessible to third parties without our prior consent. We reserve all rights, including in the case of granting a patent or granting a utility model. The illustrated construction details are non-binding solution proposals, in detail must be checked for applicability and accuracy for each project.

EDGE TRIM BY OTHERS

BEMO PROFILE EDGING

WELDING SUPPORT AND WELDING LINE BY OTHERS

BEMO STANDING SEAM PROFILE
(FOLDED)

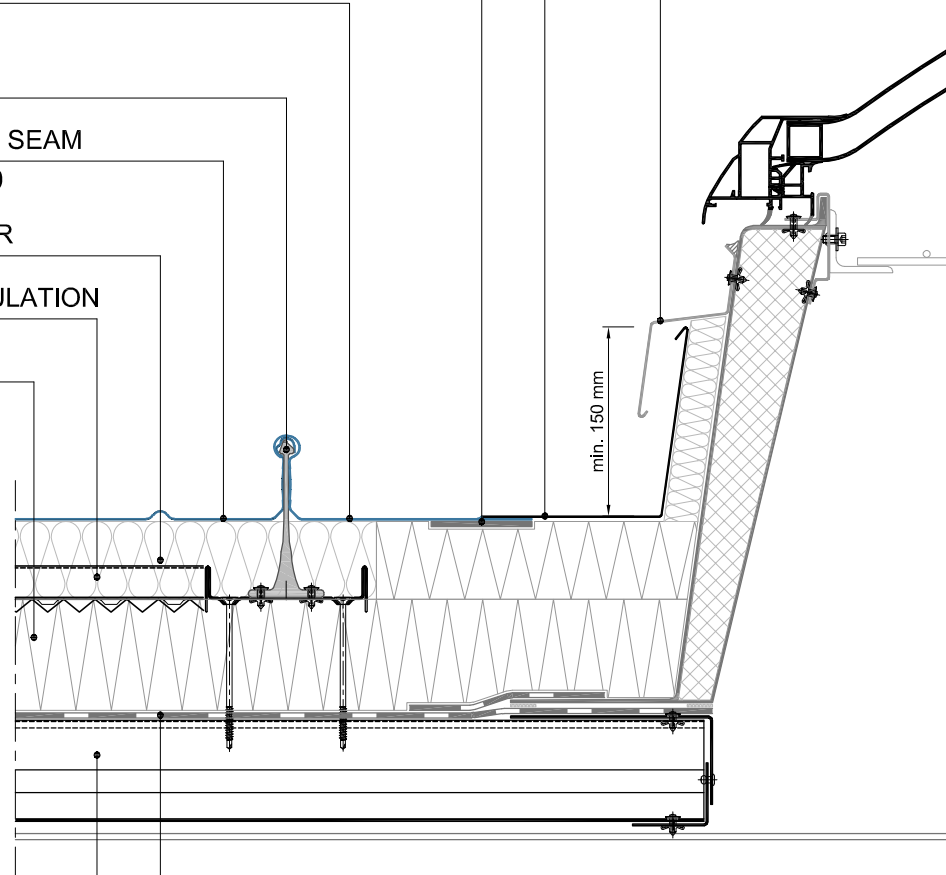
BEMO HALTER

BEMO STANDING SEAM
PROFILE N65/N50

BEMO-COMBI BAR

BEMO SOFT INSULATION

BEMO RIGID
INSULATION



BEMO LOAD-
BEARING SKIN

BEMO VAPOUR
CONTROL LAYER

- EXPANSION BANDS TO BE INSTALLED WHEN REQUIRED

DRAWING TITLE:

**LATERAL CONNECTION TO CURB
STRUCTURAL DECK (TRANSVERSE)**

TYPE:

CROSS SECTION

TYPICAL DETAIL

1721

BEMO Systems GmbH
Max-Eyth-Straße 2
D-74532 Ilshofen-Eckartshausen
Germany

T: +49(0)7904 29899-60
F: +49(0)7904 29899-61
E: sales@bemo.com
W: www.bemo.com

This drawing is the exclusive property of BEMO Systems GmbH. It may not be duplicated or made accessible to third parties without our prior consent. We reserve all rights, including in the case of granting a patent or granting a utility model. The illustrated construction details are non-binding solution proposals, in detail must be checked for applicability and accuracy for each project.