

INSTRUCTIONS FOR ASSEMBLY

BEMO-WALK AND BEMO-STEP

The BEMO walkways and steps allow permanent and safe walking on the BEMO standing seam roof in any wind and weather conditions. This is achieved using walkways and steps with tested anti-slip surfaces. Adjustable basic elements are clamped on without penetration and permanently accommodate the walkways. Parallel to the eaves or in the direction of the water flow - your safety is always ensured. In addition, the roof walkways can also be combined with a railing or the BEMO roof fall protection.

We distinguish between two types of application: Parallel to the eaves and orthogonal to the eaves. Depending on the various requirements, a number of different versions are available.



Set-up parallel to the eaves

These systems will usually be used near the ridge or eaves. If used near the eaves, the snow guard can be integrated into the system. The roof pitch is compensated for by mounting angles of different heights.

Set-up orthogonal to the eaves

Up to a roof pitch of 11°, the walkway can be mounted parallel to the standing seam without additional measures. For a roof pitch of 11° and higher, additional tread strips must be fitted. For a roof pitch or 20° and higher, individual step grates (BEMO-STEP) are required.

Dimensions of the tread surfaces

The length of the BEMO-WALK walkways can be selected between 1,500 mm, 1,980 mm and 3,000 mm; their width is 500 mm. The BEMO-STEP step grates are 260 mm wide and 500 mm long.

Snow guard

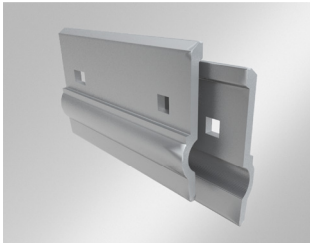
The requirements for snow guards are regulated in the rules and regulations of the related municipalities.

The Baden-Württemberg Regional Building Regulations, for example, require snow guards to be installed over traffic areas and entrances, but does not regulate the roof pitch angle from which these must be installed. In the case of standing seam roofs and the associated smooth surfaces, we generally recommend the installation of snow guards to prevent damage to persons, vehicles and buildings.

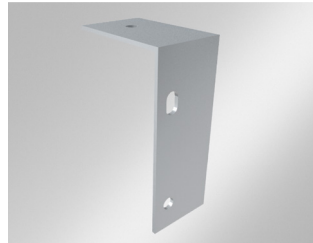
The square tube and the snow guard tabs are not included in the set product and must be ordered separately.

BEMO-WALK OT (ORTHOGONAL TO THE EAVES)

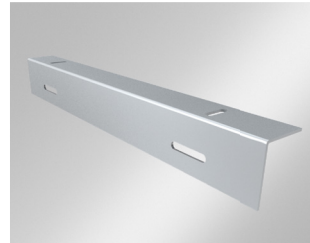
Individual components



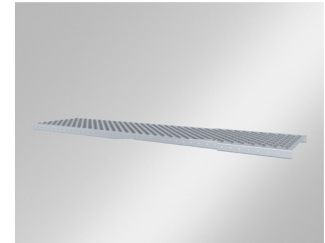
Retaining brackets for walkway



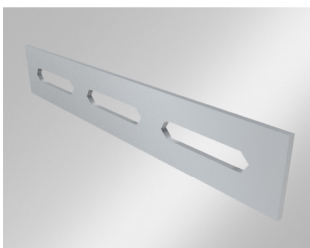
Connection angles



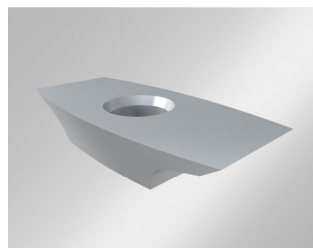
Mounting angles



Walkway



Connecting tab



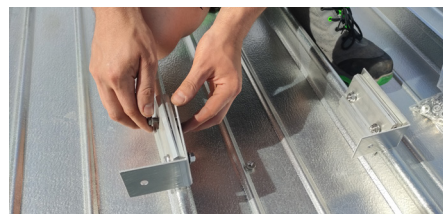
Escutcheon/rosette



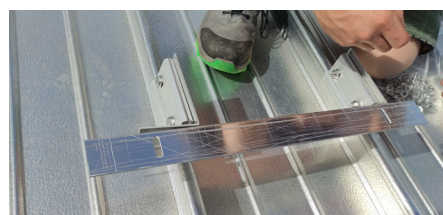
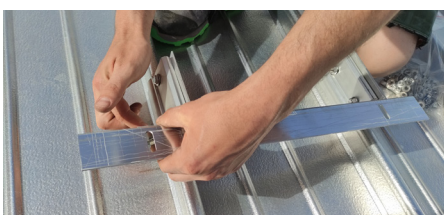
Screws and nuts

- 1 Hex screw A4 DIN 6921 M8x35
Hex nut A4 DIN 6923 M8
- 2 Screw ISO 10642 M8x65 A2
Washer M8 DIN 125 A2
Nut DIN 985 M8 A2
- 3 Screw DIN 933 M8x20 A2
2x washers M8 DIN 125 A2
Nut DIN 985 M8 A2

Installation procedure for BEMO-WALK OT



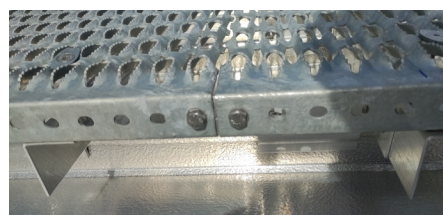
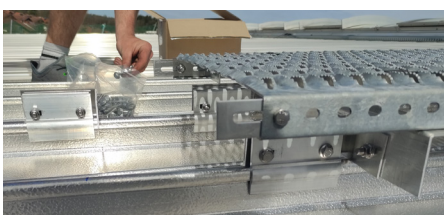
Assemble the retaining clamps for walkways together with the connection bracket on the web of the completely folded standing seam. Use the hex screw A4 DIN 6921 M8x35 with the hex nut A4 DIN 6923 M8 for this purpose.



Connect the mounting bracket with the two connection brackets. (Screw DIN 933 M8x20 A2, 2x washer M8 DIN 125 A2, nut DIN 985 M8 A2) The maximum projection is 600 mm and the maximum span is 1,200 mm.



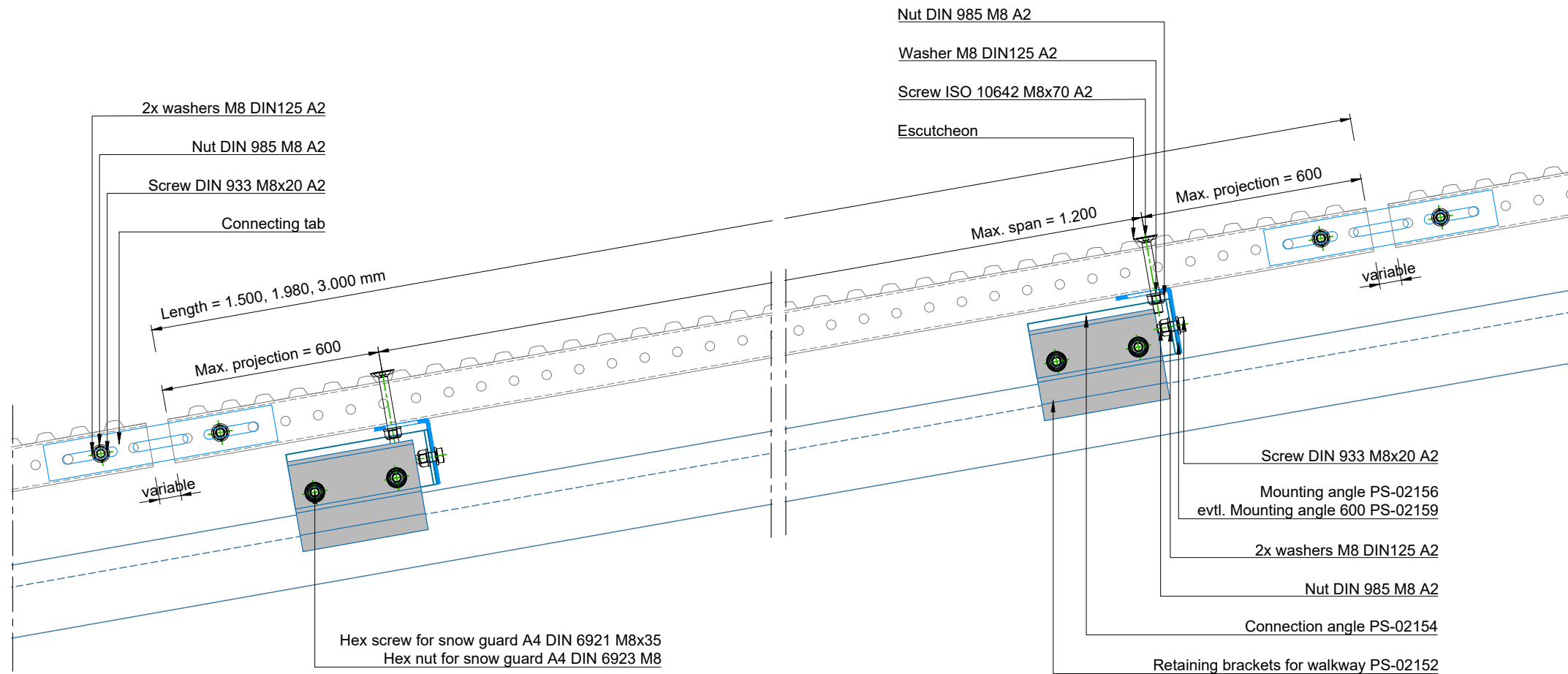
Position the grate and secure it with the screw (screw ISO 10642 M8x65 A2, washer M8 DIN 125 A2, nut DIN 985 M8 A2) including the escutcheon on both sides.



Attach the connecting tabs to the ends of each grate and screw them to the next grate.

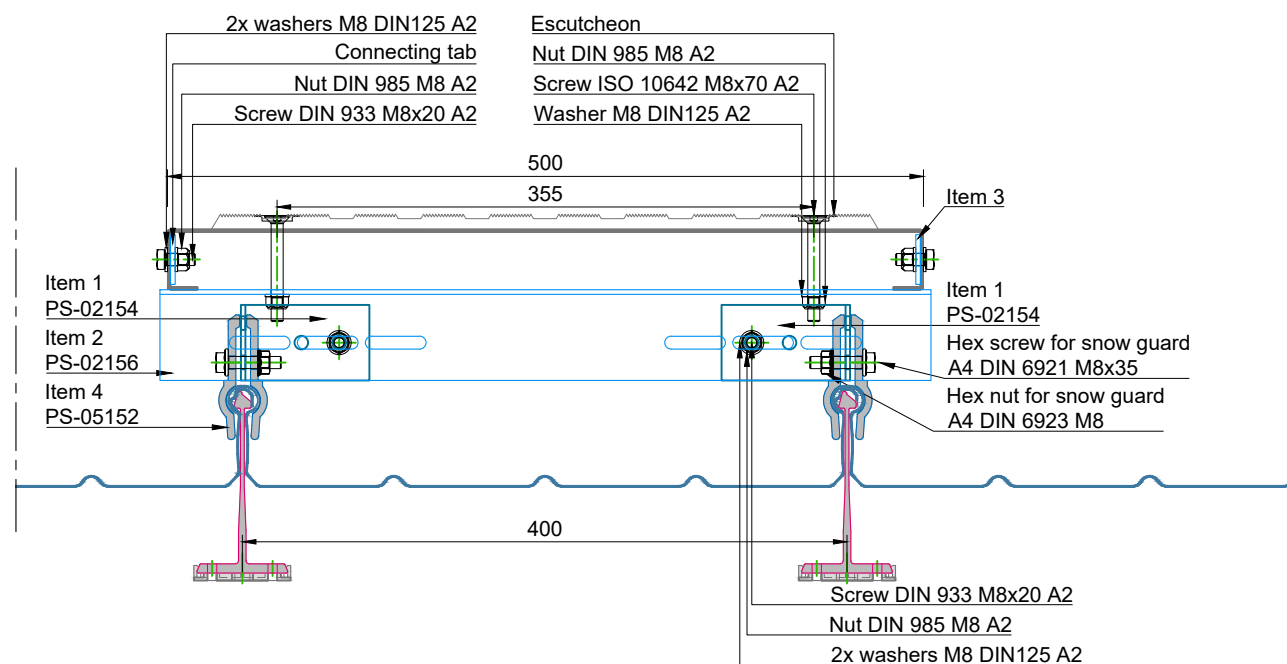
Use the screw DIN 933 M8x20 A2, 2x washers M8 DIN 125 A2 and nut DIN 985 M8 A2. Take into account the longitudinal expansion of the walkways.

Longitudinal section:



The different standing seam widths with the appropriate mounting angle and the position of the connection angle are shown on data sheet PS-02078-EN.

Cross section:



Product information:

Item	Item 1: Connection angle PS-02154	Item 2: Mounting angle PS-02156	Item 3: Connecting tab
Part number	101119	101118	101137
Materials	Aluminium	Aluminium	Aluminium
Material thickness	3 mm	3 mm	3 mm
Produktion length	130 mm	510 mm	210 mm

Item	Item 4: Retaining brackets for walkway L115 PS-02152	Item 5: Mounting angle 600 PS-02159
Part number	101106	101146
Materials	Aluminium	Aluminium
Material thickness	5 mm	3 mm
Produktion length	115 mm	610 mm

Designation:

BEMO-WALK OT

Example for roof pitch of 10° Roof
 pitch of 1.5 to 30° is possible

Type:

Walkway orthogonal to the eaves

Width of standing seam webs 250 - 600 mm

This drawing is the exclusive property of BEMO SYSTEMS GmbH.
 It may not be reproduced or made available to third parties without our prior consent. We reserve all rights, even in the case of the granting of a patent or the granting of a utility model.

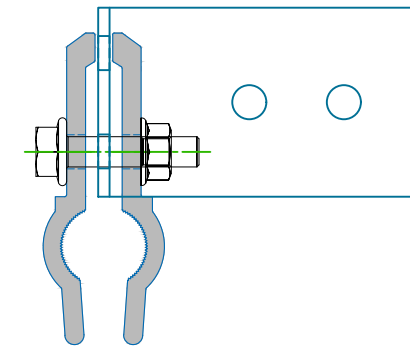
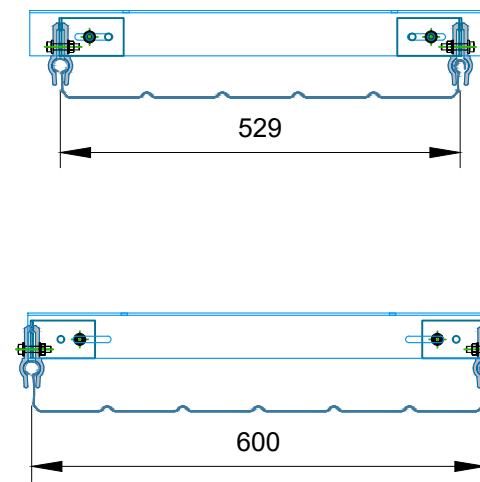
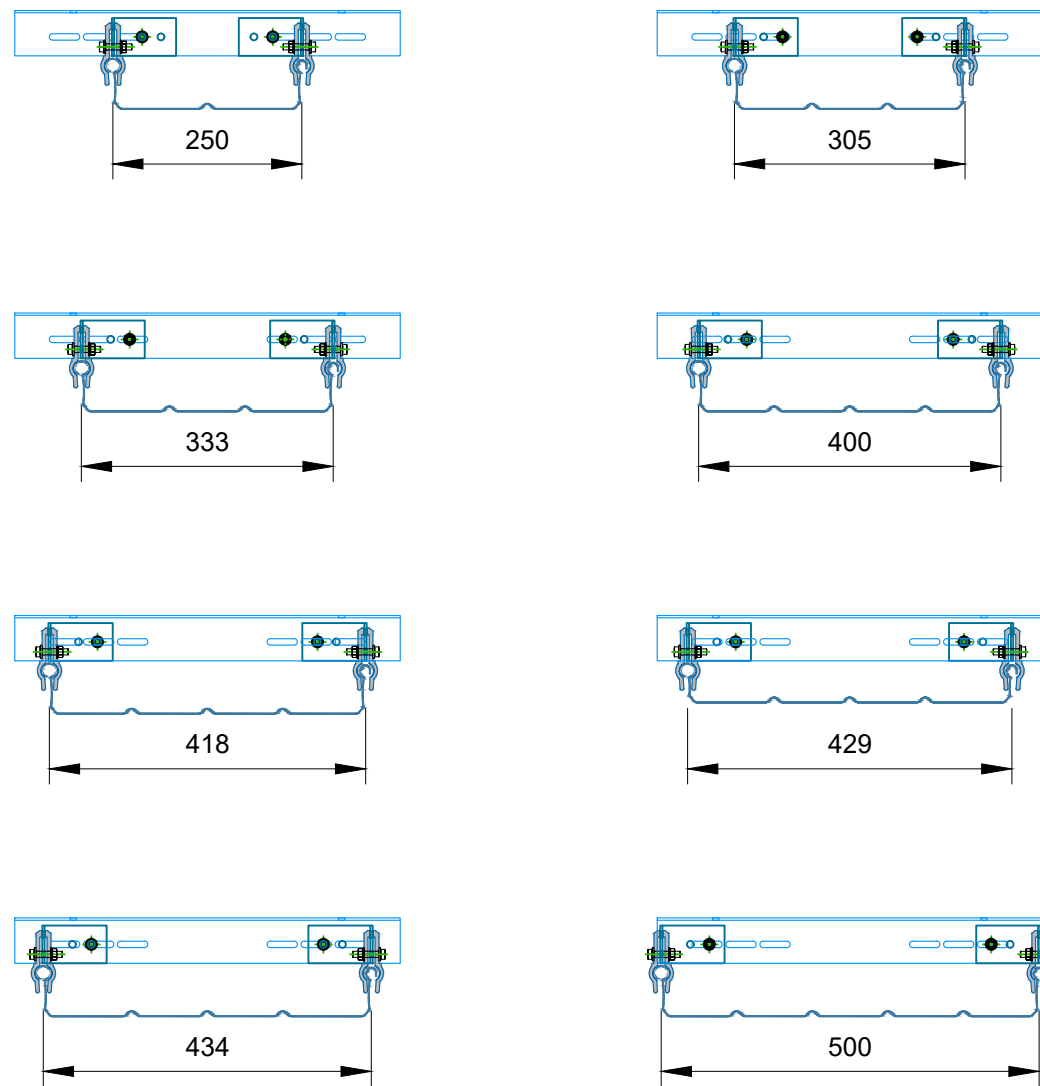
Data sheet number:

PS-02077_EN-REV03

Standing seam widths and the appropriate mounting angle:
Position of the connection angle:

Mounting angle: PS-02156

Mounting angle 600: PS-02159



Product information:

Item	Item 1: Connection angle PS-02154	Item 2: Mounting angle PS-02156	Item 3: Connecting tab
Part number	101119	101118	101137
Materials	Aluminium	Aluminium	Aluminium
Material thickness	3 mm	3 mm	3 mm
Produktion length	130 mm	510 mm	210 mm

Item	Item 4: Retaining brackets for walkway L115 PS-02152	Item 5: Mounting angle 600 PS-02159	
Part number	101106	101146	
Materials	Aluminium	Aluminium	
Material thickness	5 mm	3 mm	
Produktion length	115 mm	610 mm	

Designation:

BEMO-WALK OT

Example for roof pitch of 10° Roof
 pitch of 1.5 to 30° is possible

Type:

Walkway orthogonal to the eaves

Width of standing seam webs 250 - 600 mm

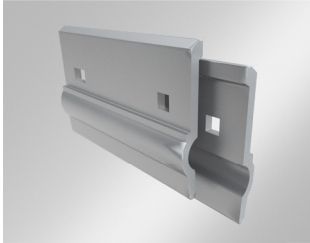
This drawing is the exclusive property of BEMO SYSTEMS GmbH.
 It may not be reproduced or made available to third parties without our prior consent. We
 reserve all rights, even in the case of the granting of a patent or the granting of a utility model.

Data sheet number:

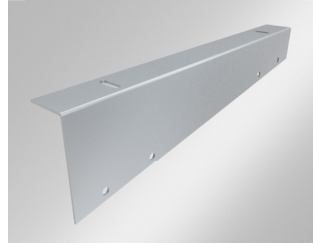
PS-02078_EN-REV02

BEMO-WALK PT (PARALLEL TO THE EAVES)

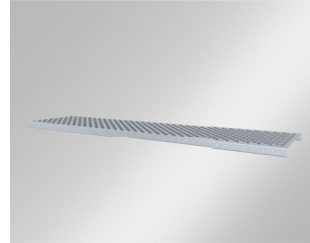
Individual components



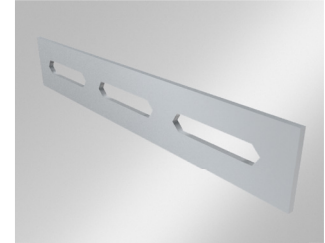
Retaining brackets for walkway



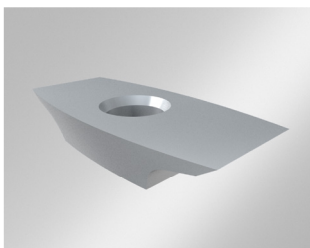
Grate support



Walkway



Connecting tab



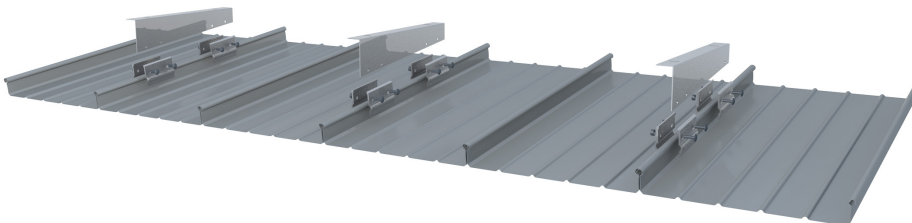
Escutcheon



Screws and nuts

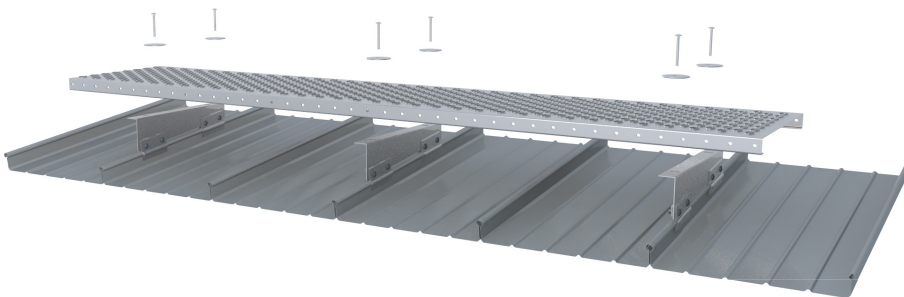
- 1 Hex screw A4 DIN 6921 M8x35
Hex nut A4 DIN 6923 M8
- 2 Screw ISO 10642 M8x65 A2
Washer M8 DIN 125 A2
Nut DIN 985 M8 A2
- 3 Screw DIN 933 M8x20 A2
2x washers M8 DIN 125 A2
Nut DIN 985 M8 A2

Installation procedure for BEMO-WALK PT

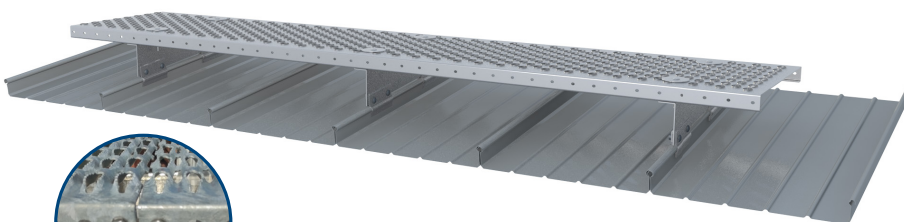


Assemble the retaining brackets for walkways together with the grate support on the web of the completely folded standing seam. Use the hex screw A4 DIN 6921 M8x35 with the hex nut A4 DIN 6923 M8 for this purpose.

The maximum projection is 600 mm and the maximum span is 1,200 mm.



Position the grate and secure it to the grate support with the screw (screw ISO 10642 M8x65 A2, washer M8 DIN 125 A2, nut DIN 985 M8 A2) including the escutcheon on both sides.

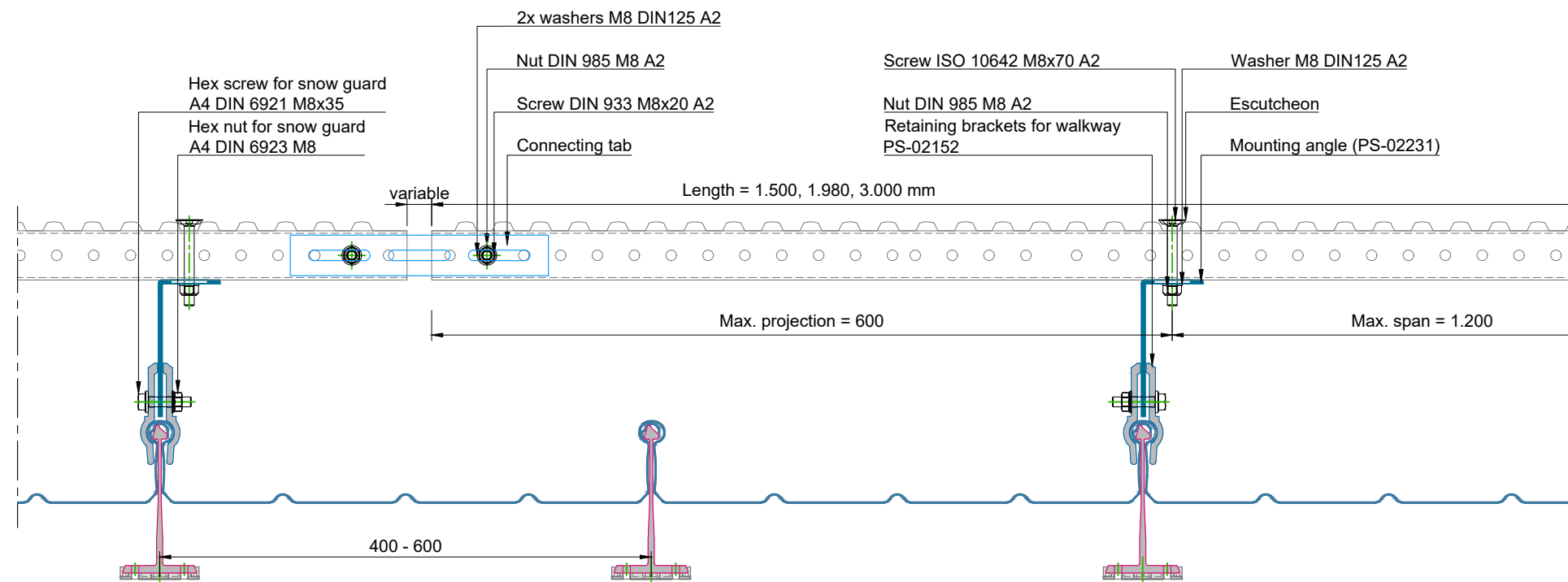


Attach the connecting tabs to the ends of each grate and screw them to the next grate.

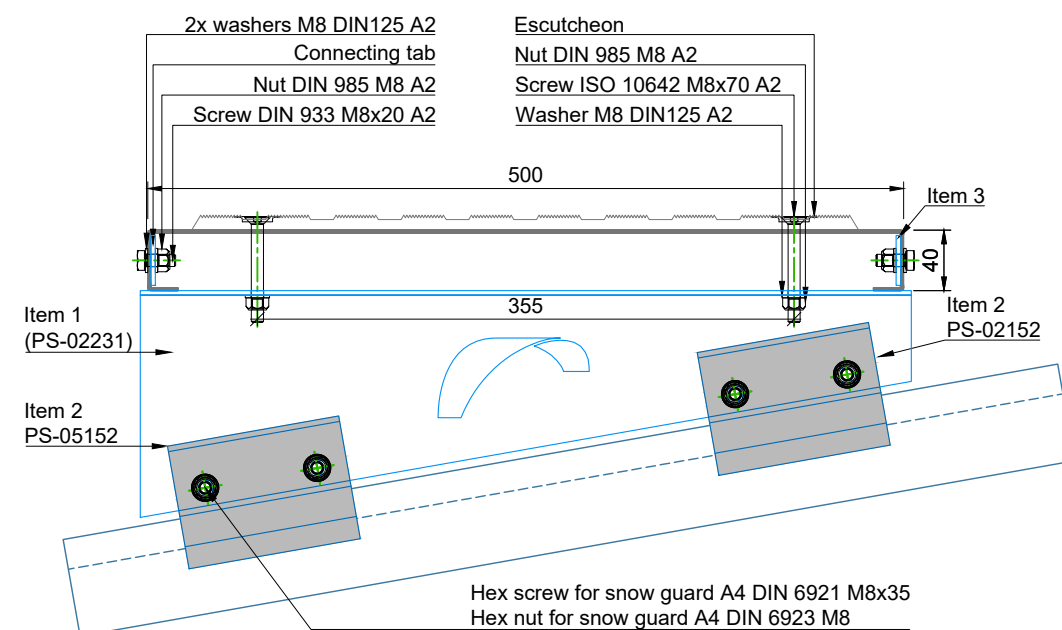
Use the screw DIN 933 M8x20 A2, 2x washers M8 DIN 125 A2 and nut DIN 985 M8 A2 for this purpose. Take into account the longitudinal expansion of the walkways.



Longitudinal section:



Cross section:



Product information:

Item	Item 1: Mounting angle (PS-02231)	Item 2: Retaining brackets for walkway L115 PS-02152	Item 3: Connecting tab
Part number	101111	101106	101137
Materials	Aluminium	Aluminium	Aluminium
Material thickness	3 mm	5 mm	3 mm
Produktion length	510 mm	115 mm	210 mm

Designation:

BEMO-WALK PT

Example for roof pitch of 10° Roof
 pitch of 1.5 to 30° is possible

Type:

Walkway parallel to the eaves

Width of standing seam webs 400 - 600 mm

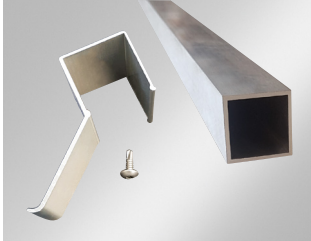
This drawing is the exclusive property of BEMO SYSTEMS GmbH.
 It may not be reproduced or made available to third parties without our prior consent. We
 reserve all rights, even in the case of the granting of a patent or the granting of a utility model.

Data sheet number:

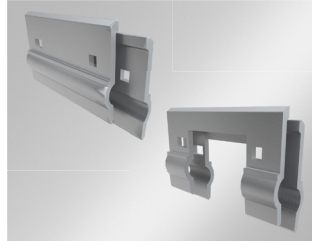
PS-02071_EN-REV02

BEMO-WALK PT MS (PARALLEL TO THE EAVES, INCLUDING SNOW GUARD)

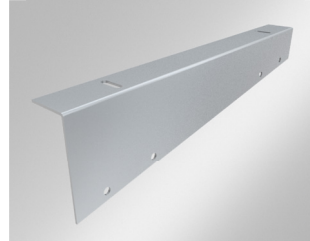
Individual components



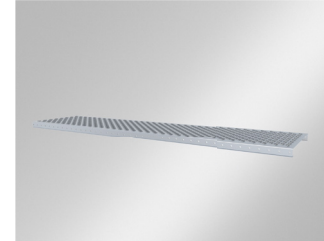
Snow stop and snow guard tube



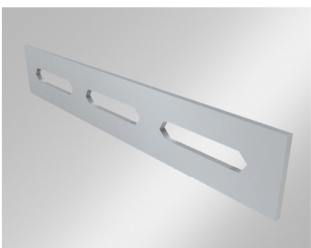
Retaining brackets /
Retaining brackets Q



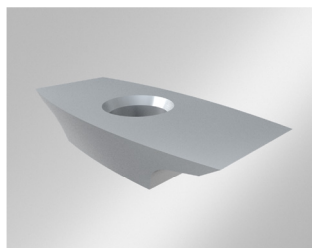
Grate support



Walkway



Connecting tab



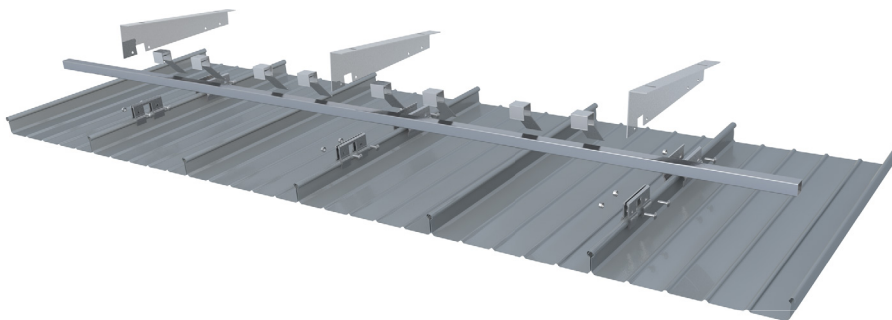
Escutcheon



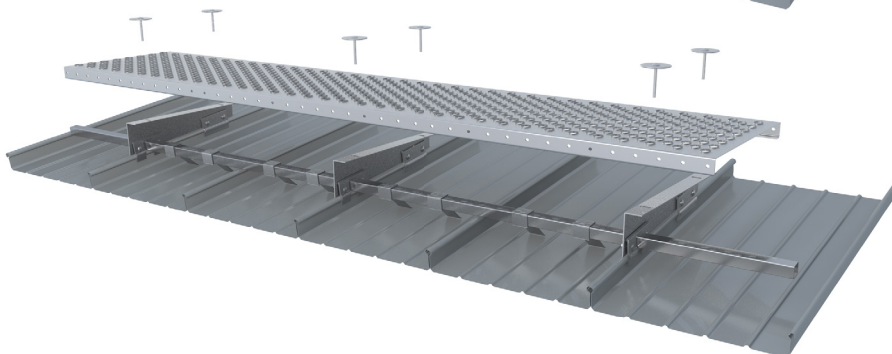
Screws and nuts

- 1 Hex screw A4 DIN 6921 M8x35
Hex nut A4 DIN 6923 M8
- 2 Screw ISO 10642 M8x65 A2
Washer M8 DIN 125 A2
Nut DIN 985 M8 A2
- 3 Screw DIN 933 M8x20 A2
2x washers M8 DIN 125 A2
Nut DIN 985 M8 A2

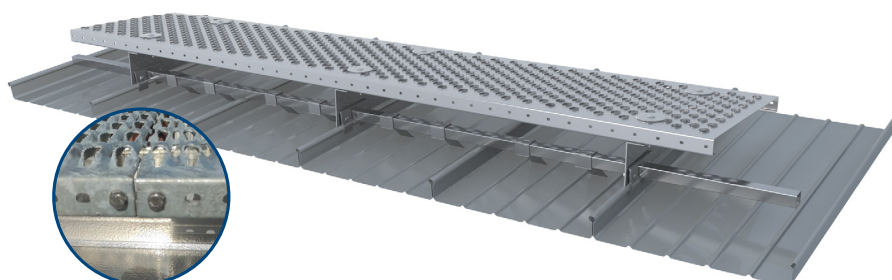
Installation procedure for BEMO-WALK PT MS



Assemble the square snow guard tube together with the retaining brackets for walkways (for every flange one retaining bracket and one retaining bracket Q) and the grate support. Use the hex screw A4 DIN 6921 M8x35 with the hex nut A4 DIN 6923 M8 for this purpose. Then, install the snow guards.



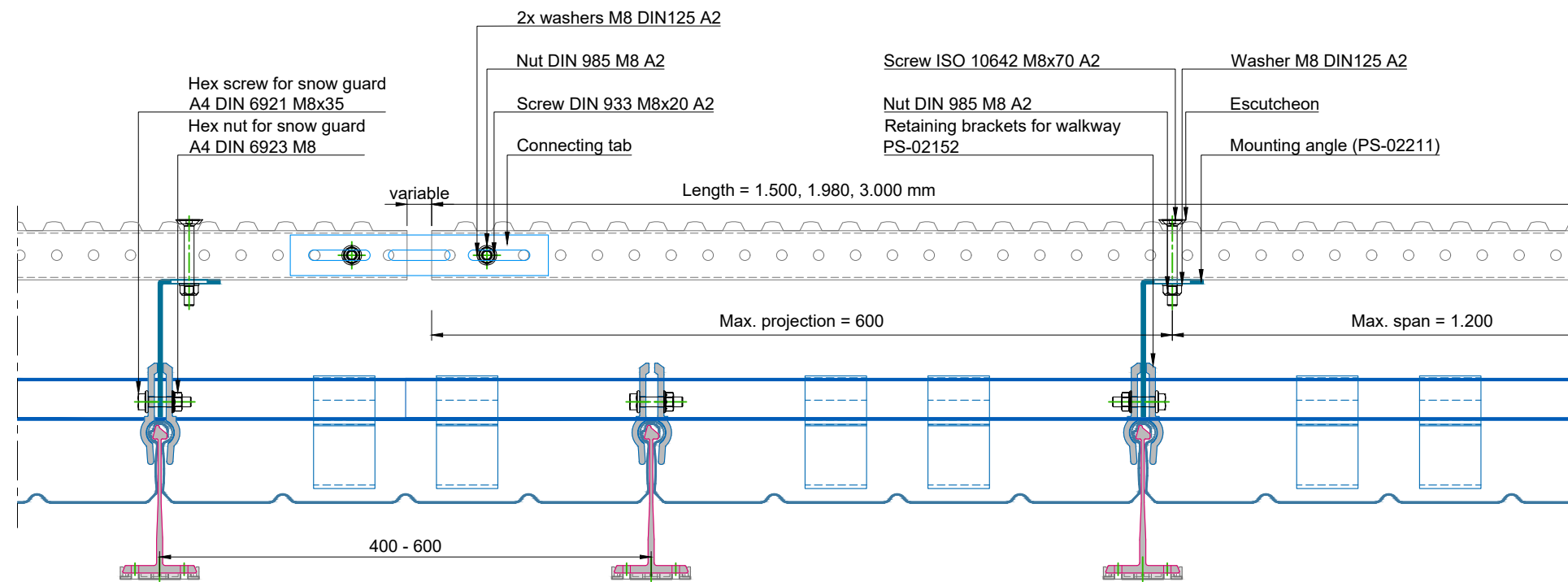
Position the grate and secure it to the grate support with the screw (screw ISO 10642 M8x65 A2, washer M8 DIN 125 A2, nut DIN 985 M8 A2) including the escutcheon on both sides.



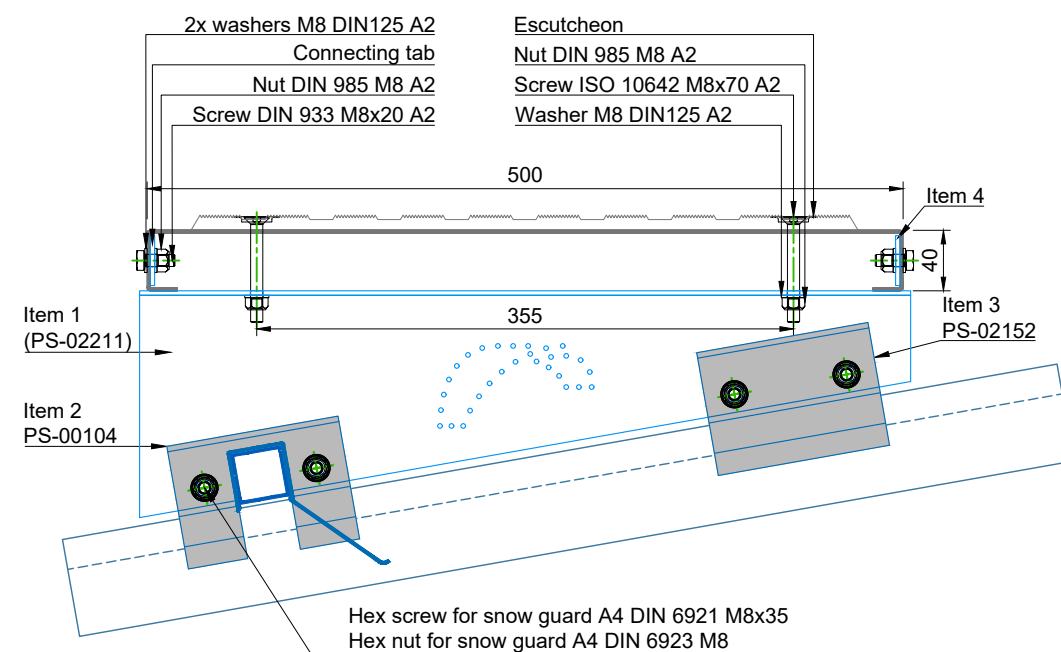
Attach the connecting tabs to the ends of each grate and screw them to the next grate.

Use the screw DIN 933 M8x20 A2, 2x washers M8 DIN 125 A2 and nut DIN 985 M8 A2 for this purpose. Take into account the longitudinal expansion of the walkways.

Longitudinal section:



Cross section:



Product information:

Item	Item 1: Mounting angle (PS-02211)	Item 2: Snow guard bracket L115 QR PS-00104	Item 3: Retaining brackets for walkway L115 PS-02152
Part number	101116	101911	101106
Materials	Aluminium	Aluminium	Aluminium
Material thickness	3 mm	5 mm	5 mm
Produktion length	510 mm	115 mm	115 mm

Item	Item 4: Connecting tab		
Part number	101137		
Materials	Aluminium		
Material thickness	3 mm		
Produktion length	210 mm		

Designation:

BEMO-WALK PT MS

Example for roof pitch of 10° Roof
 pitch of 1.5 to 30° is possible

Type:

Walkway parallel to the eaves
 Combined with snow guard

This drawing is the exclusive property of BEMO SYSTEMS GmbH.
 It may not be reproduced or made available to third parties without our prior consent. We
 reserve all rights, even in the case of the granting of a patent or the granting of a utility model.

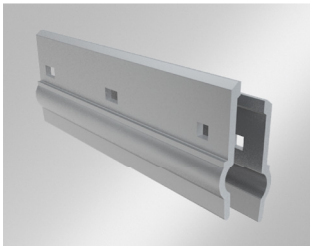
Data sheet number:

PS-02073_EN-REV02

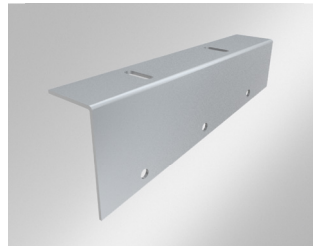
BEMO-STEP

From a roof pitch of 20°, step that compensate for the roof pitch must be used. Step grates can also be used for lower roof pitches, depending on the requirements. In general, assembly is the same as with BEMO-WALK PT, except that a somewhat longer grate support is used for tread steps. The individual steps are installed with variable spacing of approx. 300 to max. 500 mm, depending on the roof pitch and local conditions. The clear spacing between the step grates is measured horizontally.

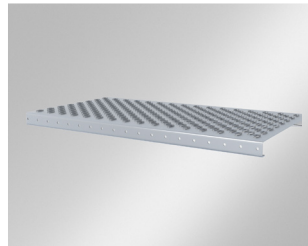
Individual components



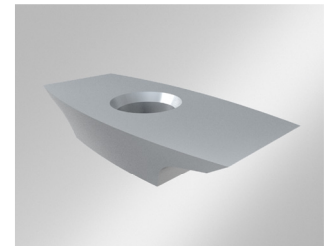
Retaining brackets for step grate



Step grate support



Step grate



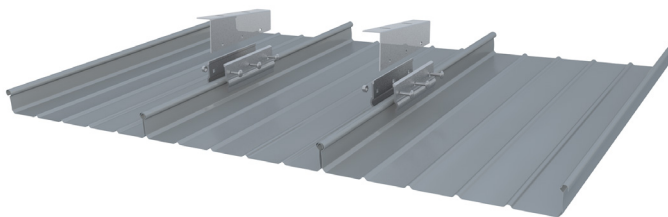
Escutcheon



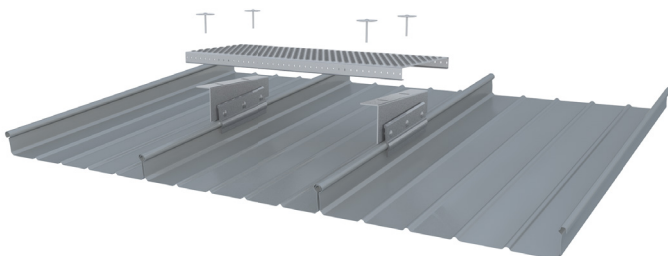
- 1 Hex screw A4 DIN 6921 M8x35
Hex nut A4 DIN 6923 M8
- 2 Screw ISO 10642 M8x65 A2
Washer M8 DIN 125 A2
Nut DIN 985 M8 A2

Screws and nuts

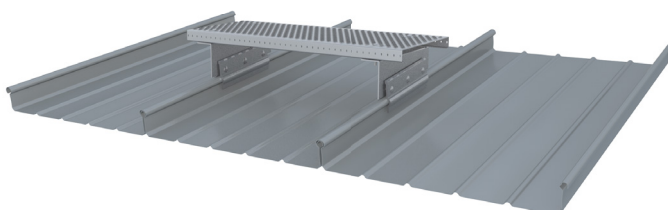
Installation procedure for BEMO-STEP



Assemble the retaining clamps for step grates together with the step grate support on the flange of the completely folded standing seam. Use the hex screw A4 DIN 6921 M8x35 with the hex nut A4 DIN 6923 M8 for this purpose.

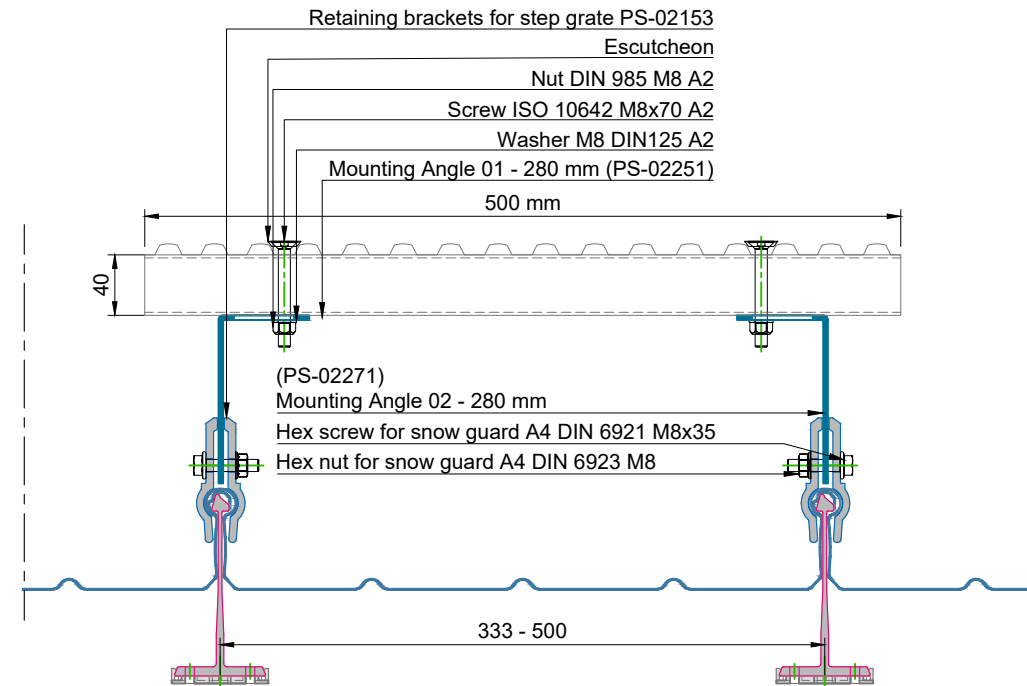
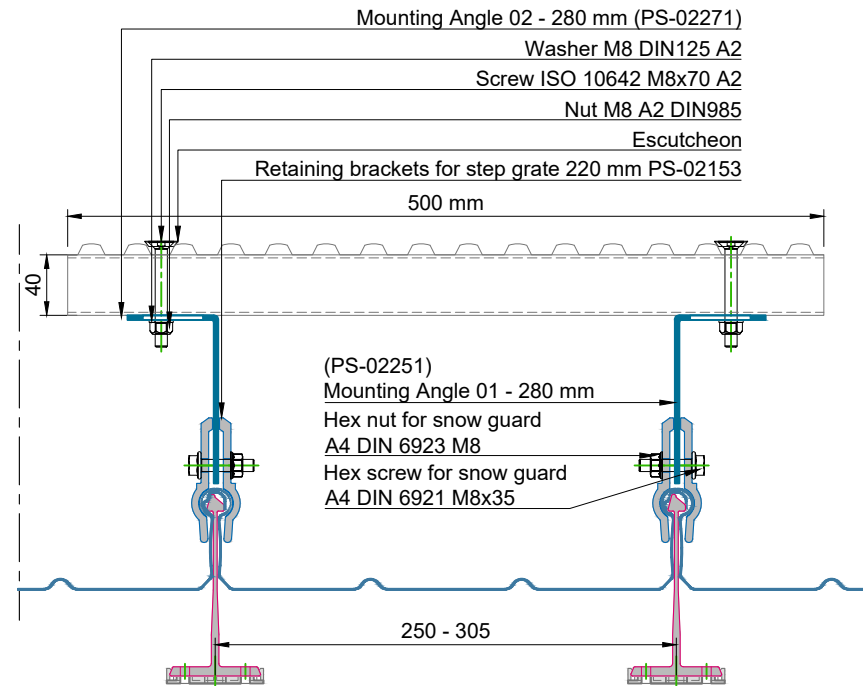


Position the grate and secure it to the grate support with the screw (screw ISO 10642 M8x65 A2, washer M8 DIN 125 A2, nut DIN 985 M8 A2) including the escutcheon on both sides.

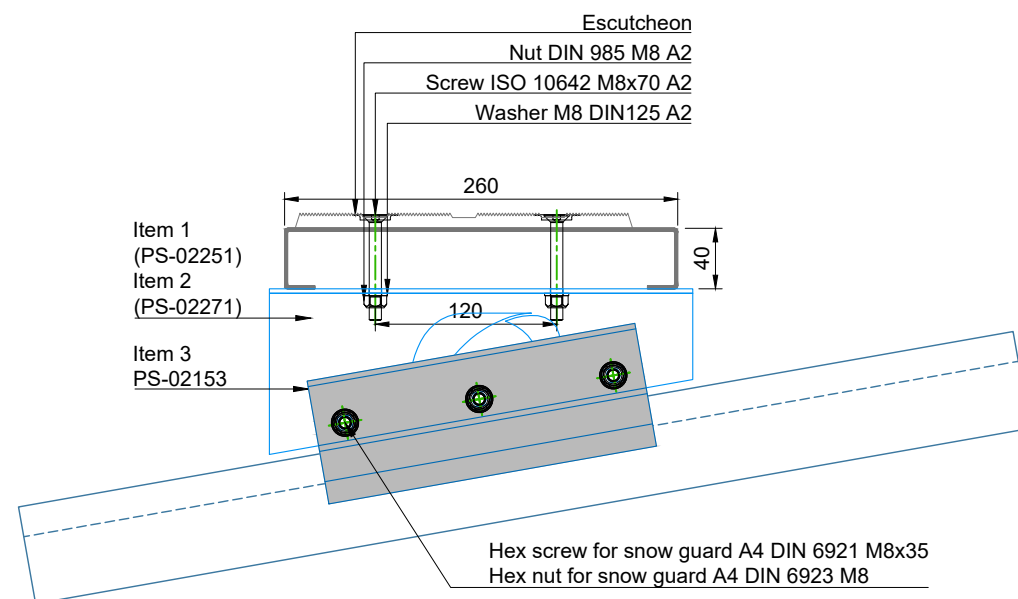


The individual steps are installed with variable spacing of approx. 300 to max. 500 mm, depending on the roof pitch and local conditions. The clear spacing between the step grates is measured horizontally.

Longitudinal section:



Cross section:



The different standing seam widths with the appropriate mounting angle, the position and orientation of them are shown on data sheet PS-02079-EN.

Product information:

Item	Item 1: Mounting angle 01 (PS-02251)	Item 2: Mounting angle 02 (PS-02271)	Item 3: Retaining brackets for step grate L220 PS-02153
Part number	101112	101129	101105
Materials	Aluminium	Aluminium	Aluminium
Material thickness	3 mm	3 mm	5 mm
Produktion length	510 mm	510 mm	220 mm

Designation:

BEMO-STEP

Example for roof pitch of 10° Roof
 pitch of 1.5 to 30° is possible

Type:

Step grate

Width of standing seam webs 250 - 500 mm

This drawing is the exclusive property of BEMO SYSTEMS GmbH. It may not be reproduced or made available to third parties without our prior consent. We reserve all rights, even in the case of the granting of a patent or the granting of a utility model.

Data sheet number:

PS-02075_EN-REV02