



BEMO-UNIKO FAÇADES



FREE PROFILE GEOMETRY FOR EVERY PANEL FAÇADE



TABLE OF CONTENTS

3

PRODUCT OVERVIEW

10

REFERENCES
WITH BEMO-UNIKO

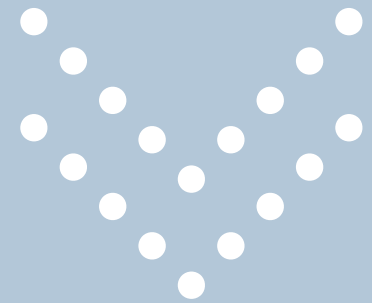
15

TEKOFIX A++
THE THERMAL BRIDGE-FREE
SUBSTRUCTURE

17

DETAILS

PRODUCT OVERVIEW



BEMO-UNIKO – DESIGN INDIVIDUAL PANEL FAÇADES

➤ BEMO-UNIKO panel façades are modern, high quality and individual. The individual profiles are all different, but they have one thing in common: they are made from metal. As a result, the benefits of metal façade cladding – such as durability, sustainability and economic efficiency – are combined with almost limitless freedom of design.

and building design. BEMO-UNIKO meander panels, serrated panels or free-form panels can also be supplied in a perforated version as shady, functional façade cladding. Concealed fixing is also possible, depending on the profile, and ensures a smooth appearance without visible screws.

FREE PROFILE GEOMETRY FOR EVERY FAÇADE

Materials, colours, profile geometries, installation direction and the method for attaching the panels can be selected to suit the construction project

➤ Thermal Spring Hotel Bad Ems // Architecture: 4a Architekten GmbH, Stuttgart



WHY BEMO-UNIKO?

- _ Individual shapes
- _ Durable
- _ Nearly unlimited colour diversity
- _ Also available in a perforated design
- _ Thermal bridge-free assembly on TEKOFIX A++ substructure
- _ Lengths of up to 6,200 mm for aluminium, 4,500 mm for steel
- _ Concealed fixing possible

BEMO-UNIKO – INDIVIDUALITY INSTEAD OF STANDARD

➤ BEMO-UNIKO special panels have an elegant, linear structure that create an interesting light and shadow effect. The shape of BEMO-UNIKO is developed and produced individually. Entirely according to your wishes.

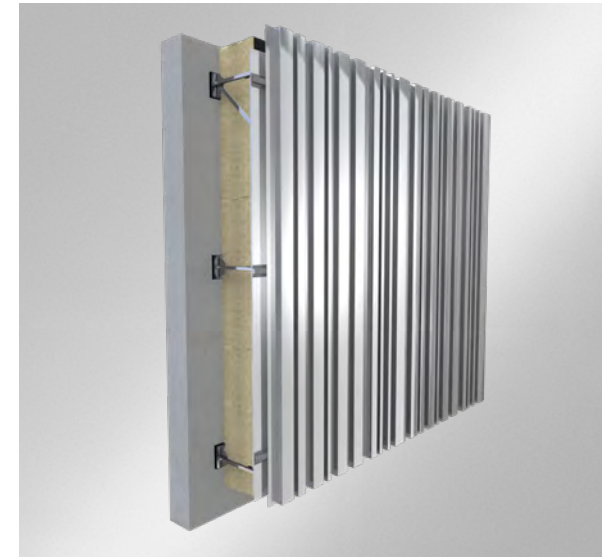
Depending on your requirements and the application, BEMO-UNIKO can be hung from the façade in a way that is hidden, visible or allows it to slide freely. Its installation direction on a building is variable – it can be installed horizontally, vertically or diagonally.

BEMO-UNIKO panels can be manufactured in nearly any colour and from nearly any material; by request, it can also be produced in a perforated version.

BEMO-UNIKO

Surface	BEMO-FLON FEVE, BEMO-FLON PROTECT, PVDF, Polyester, Anodised*,
Material	Aluminium 1,0 – 3,0 mm, Steel 0,75 – 1,5 mm Stainless steel up to 1,5 mm Zinc and Copper on request
Length max.	6.200 mm in Aluminium 6.000 mm in Steel
Perforation	Pattern according to individual sampling
Fire classification according DIN EN 13501-1	A-s1, d0, non-combustible

*Anodised surface on individual advice.

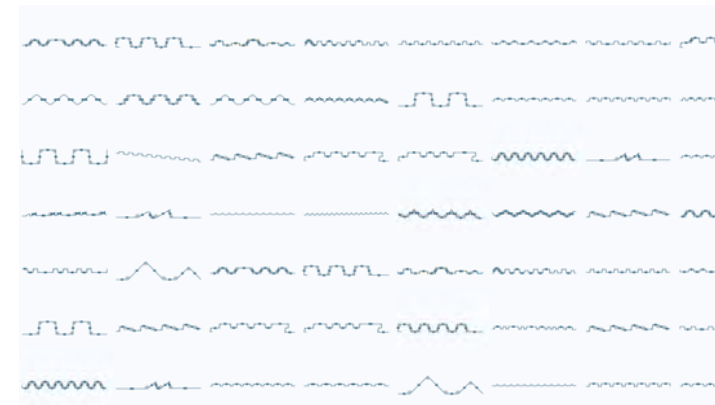


FACT SHEET

- _ Use of coated and uncoated material
- _ Curving possible
- _ perforated, part-perforated and holohedral perforation possible
- _ Special shaped panels according your ideas
- _ Production of extrusion profiles
- _ invisible fixation possible
- _ conical bending possible

SAMPLE GEOMETRY

DESIGN AND PRODUCTION ACCORDING TO
INDIVIDUAL DEMAND



BEMO-UNIKO – IDEAS BECOME REALITY



ARCHITECTURAL-IDEA

Forget all the specifications and design the façade of your dreams, completely customised.



IMPLEMENTATION BEMO

We check your idea for feasibility and optimise it if necessary so that your profile can be produced.



SAMPLE PRODUCTION

You will receive an original sample of your façade profile for approval.



OPTIMISATION AND INSTALLATION PLANNING

If necessary, your profile can be optimised once again. At the same time, the customised substructure for your project is planned.



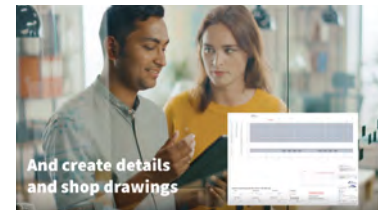
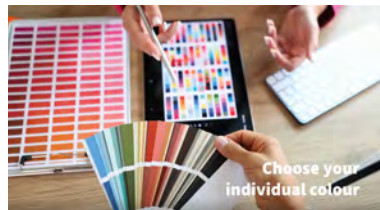
PRODUCTION AND DELIVERY

After final approval, the customised panels are manufactured and transported to the construction site.



THIS IS HOW INDIVIDUELLY BEMO-UNIKO WORKS.

CHECK VIDEO AND BE CREATIVE.



BEMO-UNIKO – THE SUSTAINABLE SOLUTION

➤ Sustainability is playing an increasingly important role in the field of construction. BEMO attaches particular importance to this. That's why BEMO-UNIKO panels are made from 100 % recycled aluminium. As the raw material for all BEMO products comes from Europe, unnecessary transportation is avoided and they are produced in accordance with correspondingly high standards.

Sustainability particularly stands out when the product is long-lasting. The BEMO-UNIKO panel façades are particularly weather-proof and

low-maintenance, meaning they remain fully functional and are visually durable, even after many years. The high quality BEMO coating systems in particular ensure long-lasting colour brilliance.

A WIN FOR PEOPLE AND THE ENVIRONMENT

If the façade needs to be replaced after a few decades, a metal façade is, of course, suitable for recycling. Aluminium is and remains in the material cycle. No new resources are required.

➤ Breitengüßbach Kindergarten // Architecture: Paptistella Architekten



BEMO SUSTAINABILITY

- _ Expected lifetime of the products is more than 50 years
- _ Raw material with up to 100 % recyclingrate
- _ Ecologically optimized colour coating
- _ Extremely low maintenance and cleaning requirements thanks to high-quality coatings
- _ 100 % Recyclability of Materials
- _ Short transportation routes
- _ Thermal bridge free ventilated substructure system when using TEKOFIX A++ build-up
- _ Corporate processes designed for maximum sustainability

BEMO COLOUR VARIETY – HIGHEST QUALITY FOR LONG-LASTING FACADES

Just like the shape of the façade panels, the choice of colour plays a major role in the aesthetics of a building. BEMO-FLON offers an extremely wide range of colours, including extremely matt colours.

BEMO-UNIKO panels are supplied with a BEMO-FLON coating as standard.

Various BEMO-FLON coating systems are available depending on the requirements. Within the BEMO-FLON colour worlds, the large selection of standard colours from the product range is available. Almost all NCS and RAL colours are possible. Special colours can be realised according to requirements and individual agreement.

The BEMO-FLON coating impresses with a life expectancy of up to 50 years and is therefore particularly durable and sustainable. BEMO-FLON is extremely UV and corrosion resistant. It is also characterised by efficient chalking resistance. No colour abrasion gets into the groundwater.

With BEMO-FLON you decide for a sustainable solution. For our environment. For us.

➤ BEMO-FLON FEVE (ALL NCS- AND RAL-COLOURS POSSIBLE)

➤ BEMO-FLON PROTECT (ALL NCS- AND RAL-COLOURS POSSIBLE)

➤ BEMO-FLON PVDF (ALL NCS- AND RAL-COLOURS POSSIBLE)

➤ BEMO-FLON STRUCTURE

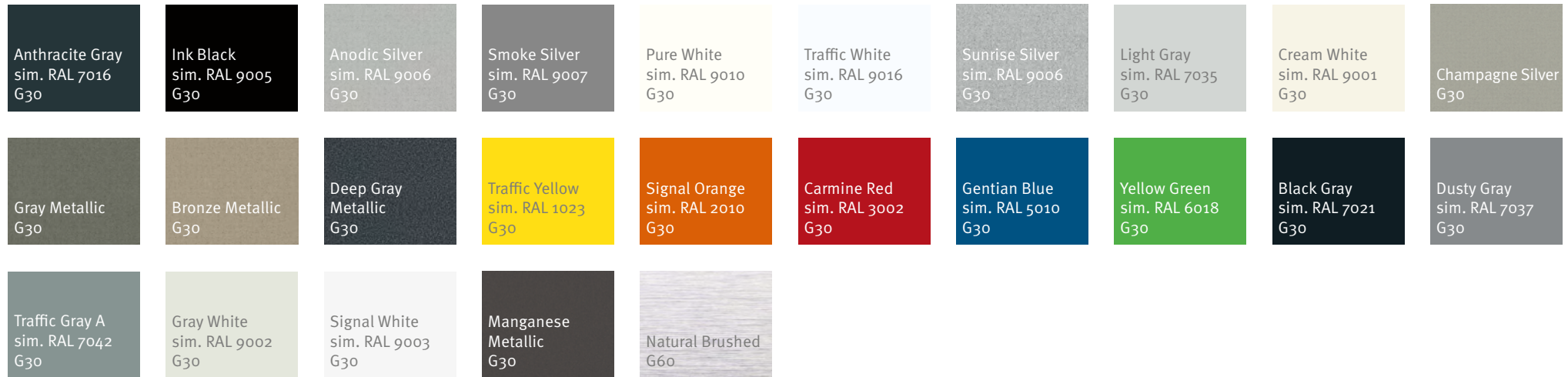
➤ Swimming pool Bad Cannstatt // Architecture: Lehmann Architekten GmbH

BEMO-FLON WORLD OF COLOURS

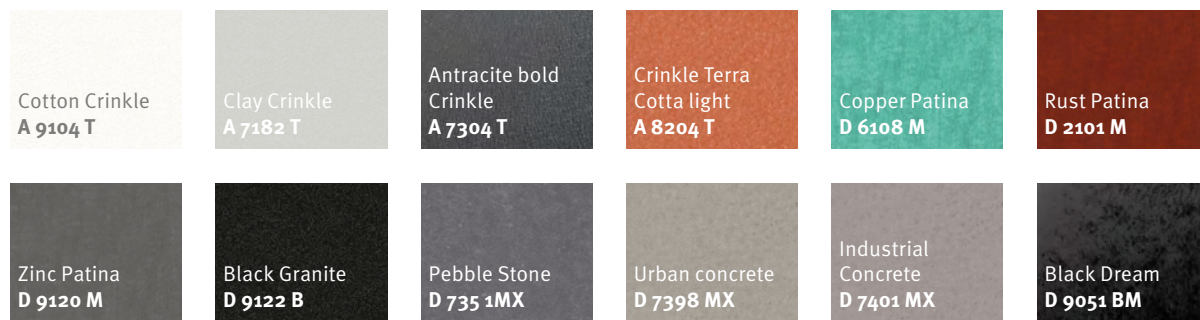
- _ Different coating systems depending on the application
- _ Gloss level from 3 GE up to 90 GE possible
- _ 25-45 µm coating thickness
- _ Life expectancy up to 50 years
- _ Ecologically optimized systems
- _ Exclusive European Origin
- _ Maximum colour variety: over 40.000 colour- and surface possibilities and even self-mixed colours from the colour laboratory



COLOUR EXAMPLES FOR BEMO-FLON FEVE, PROTECT, PVDF



COLOUR EXAMPLES FOR BEMO-FLON STRUCTURE



MIXING OF DESIRED COLOUR IN THE LABORATORY



© Monopol AG / Andreas Schwaiger

REFERENCES WITH BEMO-UNIKO



BEMO-UNIKO UNLIMITED VARIETY



Daniel Löb/vor-ort-foto.de

MRP/Studio © Michael Renner

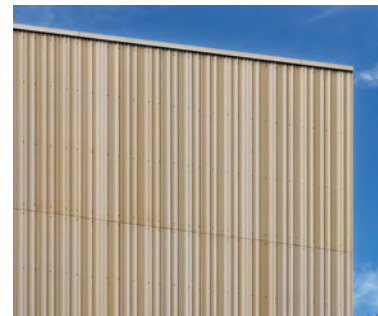
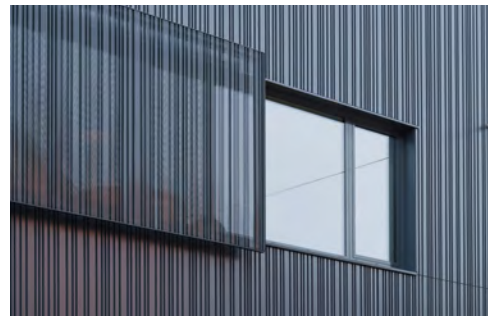
➤ BREITENGÜSSBACH KINDERGARTEN

- Product:** BEMO-UNIKO special façade panel
BEMO aluminium standing seam N65-400
- Architecture:** Paptistella Architekten
- Special features:** Vivid shade of red with colour-fast BEMO-FLON coating.
Roof, façade and connection parts in the same shade.

➤ NEW POLICE BUILDING AND FIRE STATION IN JEBENHAUSEN

- Product:** BEMO-UNIKO special façade panel
- Architecture:** Gaus & Knödler Architekten PartGmbH
(as of 01/09/2019: Gaus Architekten)
- Special features:** Special surface with bronze effect.

BEMO-UNIKO UNLIMITED VARIETY



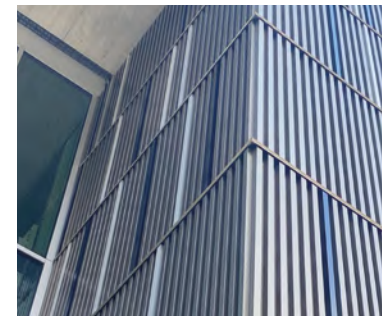
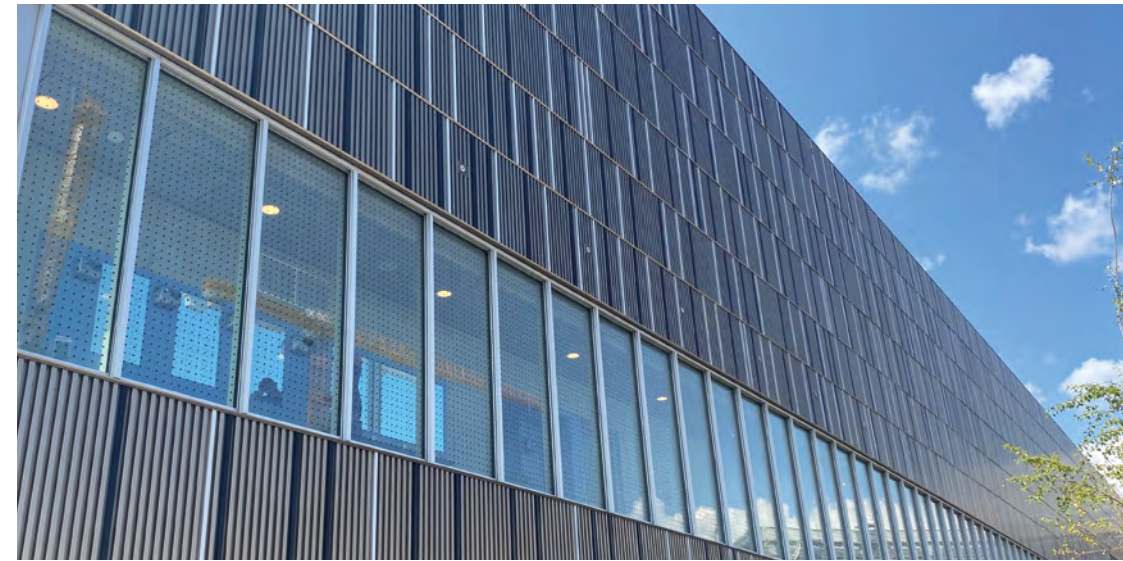
➤ EISLINGEN FITNESS CENTRE

Product: BEMO-UNIKO special façade panel
Architecture: f.r.a. frank rögner architekt
Special features: Combination of perforated and non-perforated panels.

➤ CITY CENTER SCHELMENGRABEN WIESBADEN

Product: BEMO-UNIKO special façade panel
Architecture: sdks architekten dummert sonek partner mbB
Special features: In Gold anodized surface.
Individual BEMO-UNIKO jagged panel.

BEMO-UNIKO UNLIMITED VARIETY



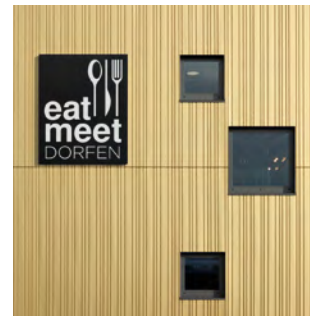
➤ RESEBERG RESIDENTIAL BUILDING

Product: BEMO-UNIKO special façade panel
Architect: RHWZ Architekten
Special features: Individual perforation on all balconies.
TEKOFIX A++ substructure horizontal.

➤ BAD CANNSTATT SWIMMING POOL

Product: BEMO-UNIKO special façade panel
Architecture: Lehmann Architekten GmbH
Special features: Multicoloured with anodised rods.

BEMO-UNIKO UNLIMITED VARIETY



David Matthiessen

➤ THERMENHOTEL BAD EMS

Product: BEMO-UNIKO special façade panel
Architect: 4a Architekten GmbH Stuttgart
Special features: Rounded areas and special shades in BEMO-FLON.
 Combined with BEMO-BOND composite façade panels.

➤ PETROL STATION, DORFEN

Product: BEMO-UNIKO special façade panel
Architecture: mitschelen & gerstl, architects Passau
Special features: Genuine anodised G30 gold shade including
 BEMO-BOND undercoat.

TEKOFIX A++ THE THERMAL BRIDGE-FREE SUBSTRUCTURE



TEKOFIX-A++ SUBSTRUCTURE THERMAL BRIDGE-FREE WITH MAXIMUM FIRE PROTECTION



THERMAL BRIDGE-FREE:

In terms of energy, each wall structure is only considered to be as good as the heat insulation used. However, linear, selective and, of course, material-related thermal bridges reduce the insulating capacity of an insulating material. Only substructures with low heat conductivity can reduce these systemic thermal bridges. Linear substructures should be avoided entirely where possible.

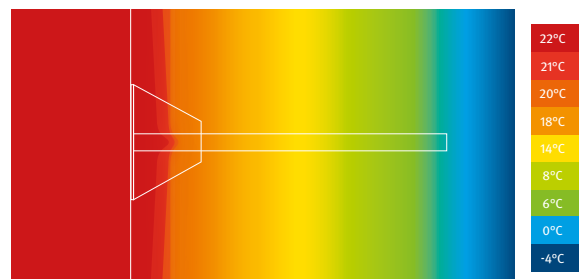
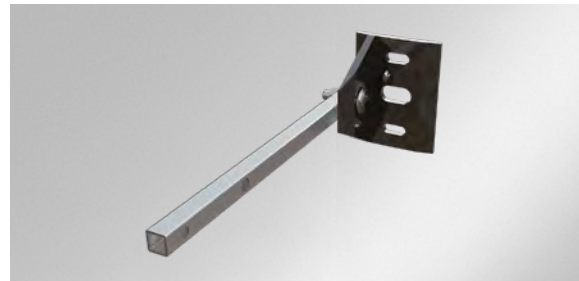


Horizontal and vertical substructure with TEKOFIX A++



TEKOFIX A++:

The TEKOFIX A++ console is used in wall structures that are insulated and which are to meet the highest requirements in terms of energy. It is highly efficient and hardly conducts heat. The use of TEKOFIX A++ can demonstrably achieve an insulation saving of up to 75 % compared to conventionally insulated aluminium substructures. The thickness of the wall structure is significantly reduced when using TEKOFIX A++. Connecting to windows and doors and the entire installation process are made significantly easier and thus greatly optimised economically.



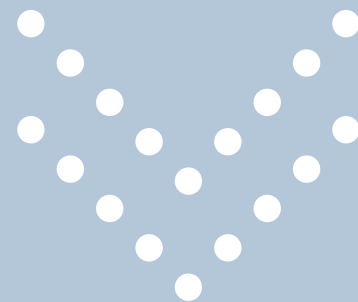
PASSIVE HOUSE-CERTIFIED:

The TEKOFIX A++ substructure, which can be realised in projections of 100 mm to 500 mm, is passive house-certified, thus making a sustainable contribution to efficient insulation. Depending on the configuration and usage (horizontal or vertical application), the consoles have a Chi value of 0.0016 to 0.0041 W/K. As a result, U values of 0.12 W/m²*K and better can be achieved without any problems. We're happy to help with the building physics calculations and to develop an overall concept with you.

FACT SHEET

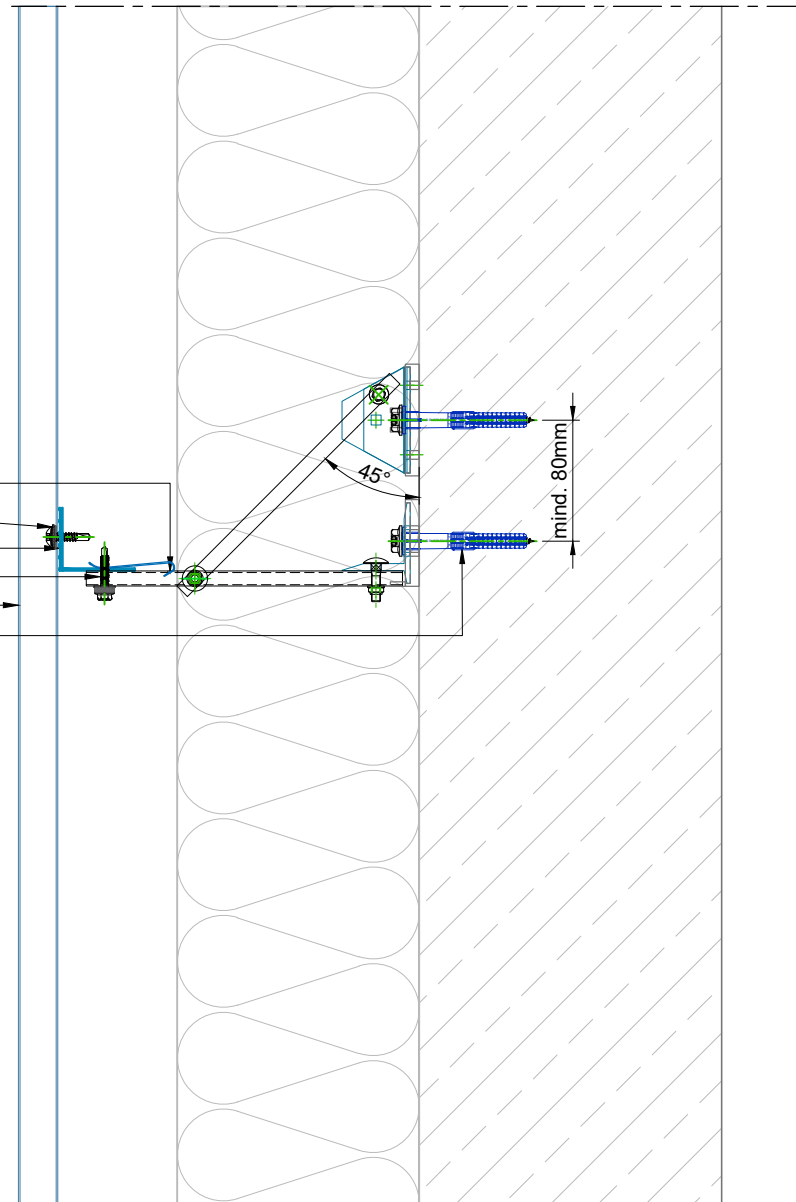
- _ Fire class rating of A
- _ Improves the U value by up to 75 %
- _ Passive house-certified
- _ Very low Chi values
- _ Extremely resilient

DETAILS





- TEKOFIX-Konsole A++ mit Feder
- Befestigungsmittel
- Horizontales Tragprofil
- Verbindungsmittel
- Sonderprofil A
- Verankerungsmittel



Bezeichnung:

Fassadenaufbau
Sonderprofil A, Verlegung vertikal

Typ:

Vertikalschnitt

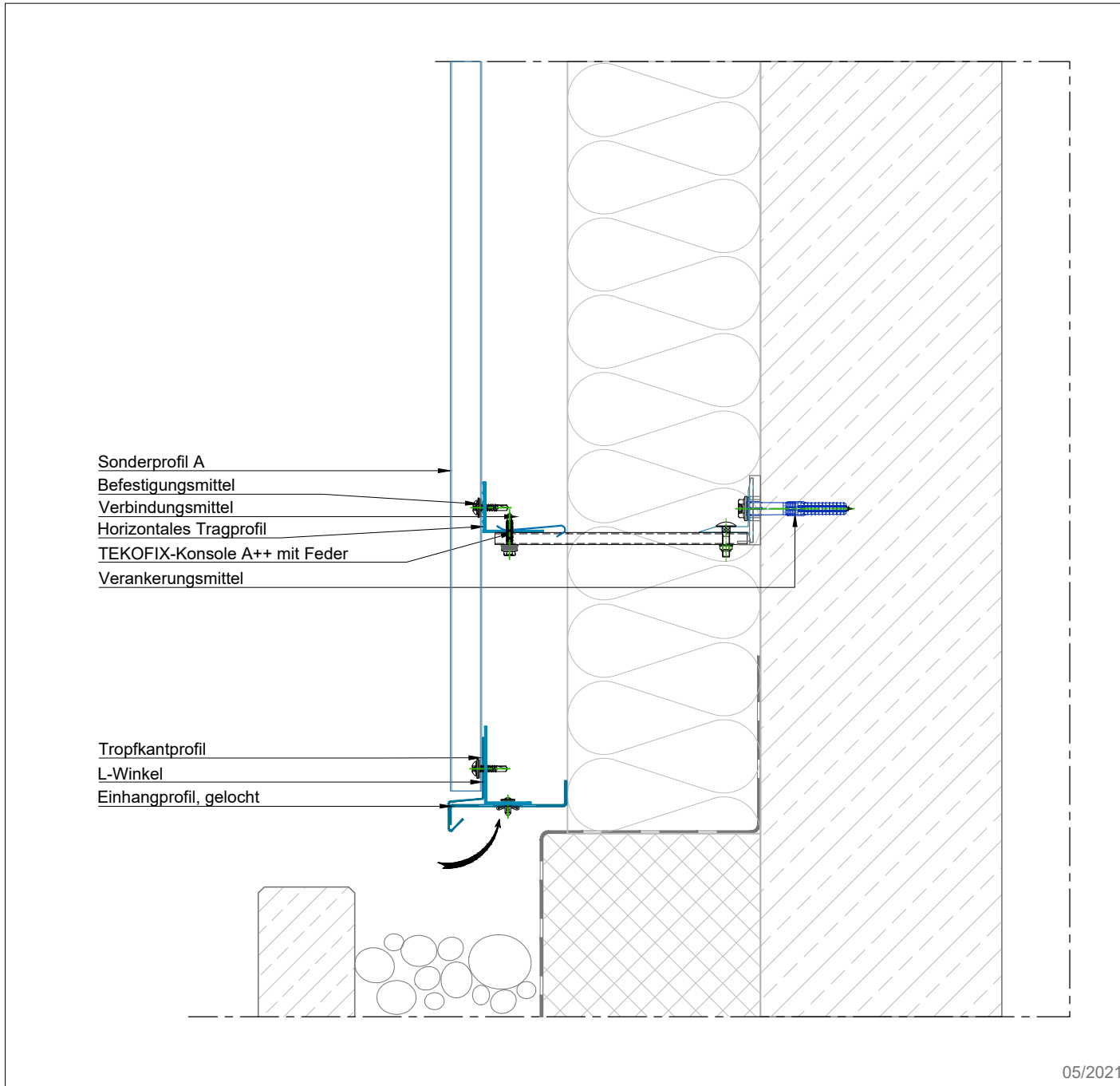
Grundsatzdetail

F6100

BEMO Systems GmbH
Max-Eyth-Straße 2
D-74532 Ilshofen-Eckartshausen
Germany

T: +49(0)7904 29899-60
F: +49(0)7904 29899-61
E: sales@bemo.com
W: www.bemo.com

Diese Zeichnung ist ausschließlich Eigentum der BEMO Systems GmbH. Ohne unsere vorherige Zustimmung darf sie weder vervielfältigt, noch Dritten zugänglich gemacht werden. Wir behalten uns alle Rechte vor, auch für den Fall der Patenterteilung oder der Gebrauchsmustererteilung. Die abgebildeten Konstruktionsdetails sind unverbindliche Lösungsvorschläge, die im einzelnen für jedes Projekt auf Anwendbarkeit und Richtigkeit geprüft werden müssen.



Bezeichnung:

Fassadenaufbau

Sonderprofil A, Verlegung vertikal

Typ:

Sockelausbildung Vertikalschnitt

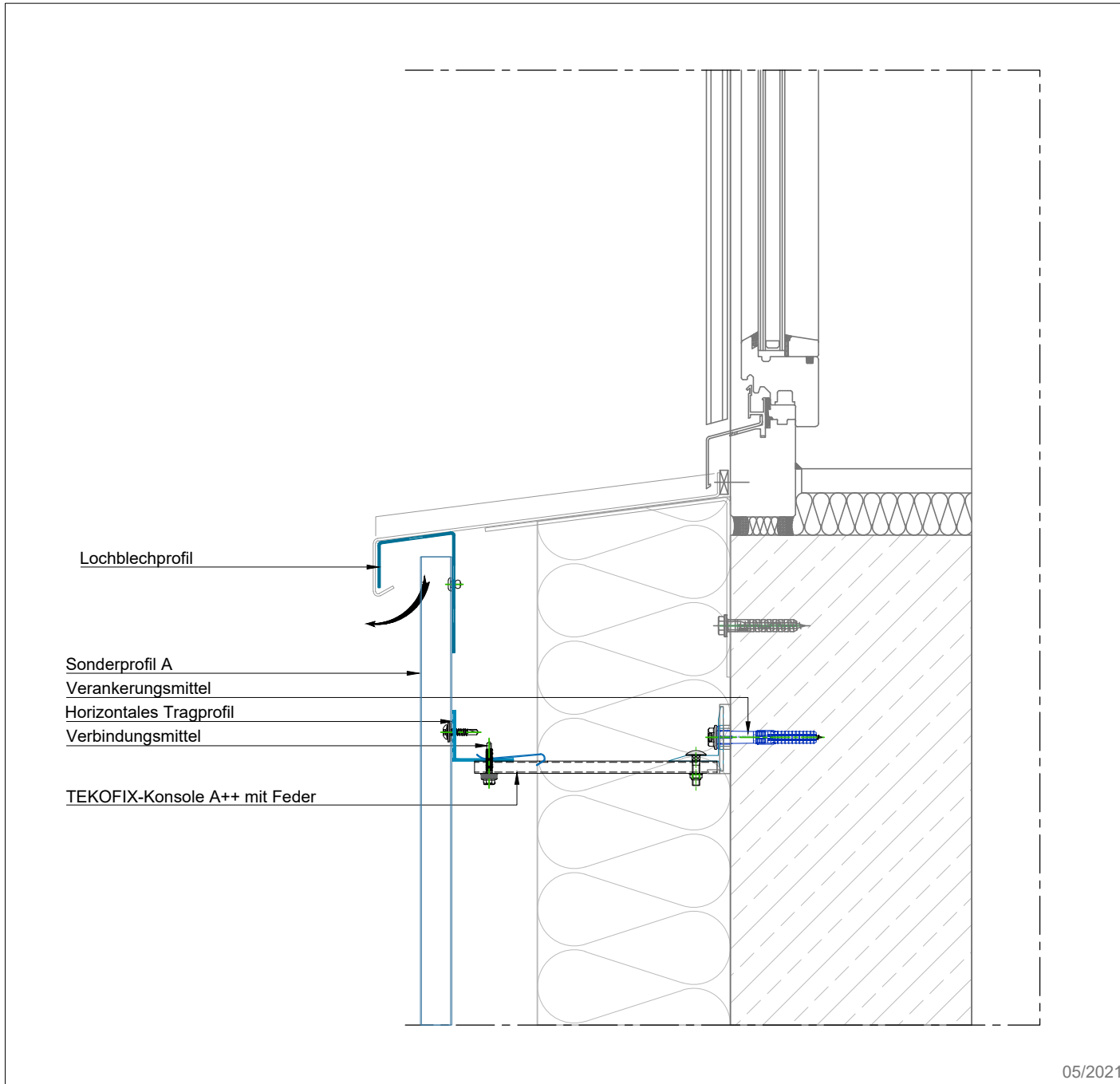
Grundsatzdetail

F6102

BEMO Systems GmbH
 Max-Eyth-Straße 2
 D-74532 Ilshofen-Eckartshausen
 Germany

T: +49(0)7904 29899-60
 F: +49(0)7904 29899-61
 E: sales@bemo.com
 W: www.bemo.com

Diese Zeichnung ist ausschließlich Eigentum der BEMO Systems GmbH. Ohne unsere vorherige Zustimmung darf sie weder vervielfältigt, noch Dritten zugänglich gemacht werden. Wir behalten uns alle Rechte vor, auch für den Fall der Patenterteilung oder der Gebrauchsmustererteilung. Die abgebildeten Konstruktionsdetails sind unverbindliche Lösungsvorschläge, die im einzelnen für jedes Projekt auf Anwendbarkeit und Richtigkeit geprüft werden müssen.



Bezeichnung:

Fassadenaufbau
Sonderprofil A, Verlegung vertikal

Typ:

Fensterausbildung unten Vertikalschnitt

Grundsatzdetail

F6103

BEMO Systems GmbH
Max-Eyth-Straße 2
D-74532 Ilshofen-Eckartshausen
Germany

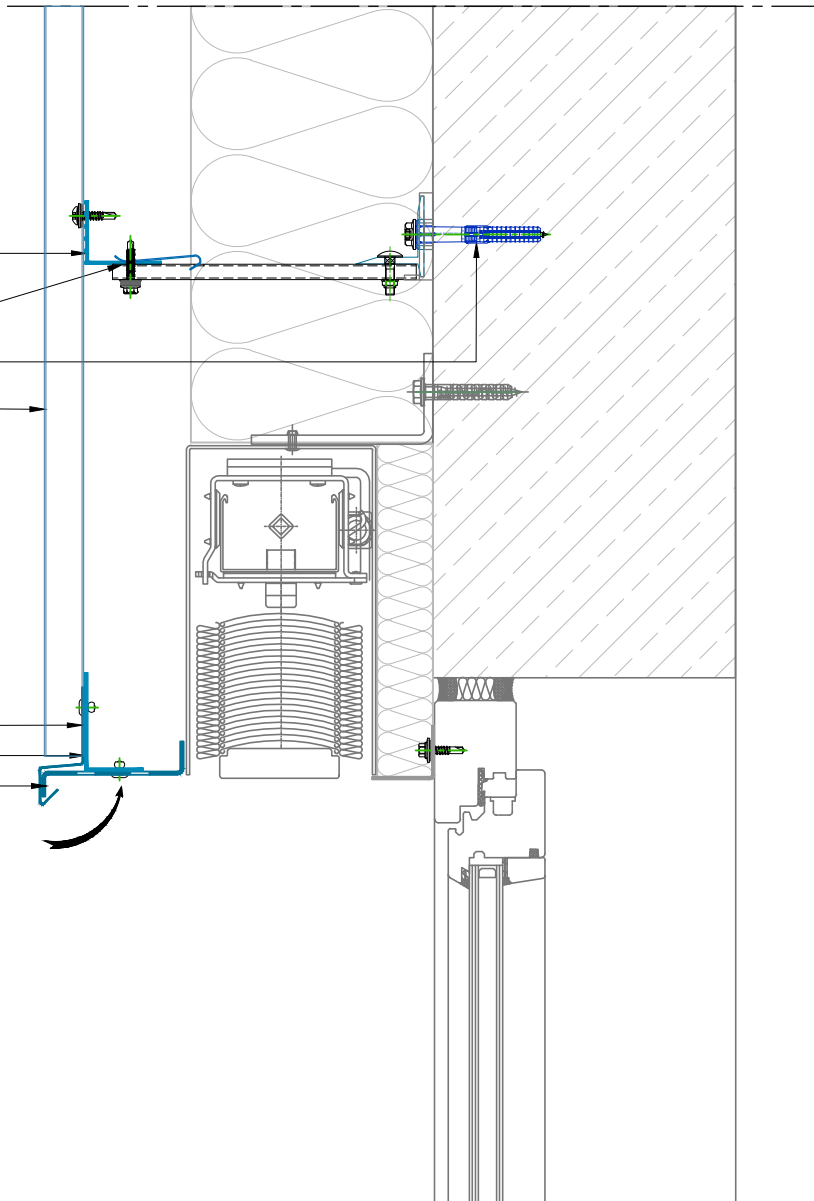
T: +49(0)7904 29899-60
F: +49(0)7904 29899-61
E: sales@bemo.com
W: www.bemo.com

Diese Zeichnung ist ausschließlich Eigentum der BEMO Systems GmbH. Ohne unsere vorherige Zustimmung darf sie weder vervielfältigt, noch Dritten zugänglich gemacht werden. Wir behalten uns alle Rechte vor, auch für den Fall der Patenterteilung oder der Gebrauchsmustererteilung. Die abgebildeten Konstruktionsdetails sind unverbindliche Lösungsvorschläge, die im einzelnen für jedes Projekt auf Anwendbarkeit und Richtigkeit geprüft werden müssen.



Horizontales Tragprofil
 TEKOFIX-Konsole A++ mit Feder
 Verankerungsmittel
 Sonderprofil A

Tropfkantprofil
 L-Winkel
 Einhangprofil, gelocht



Bezeichnung:

Fassadenaufbau
 Sonderprofil A, Verlegung vertikal

Typ:

Fensterausbildung oben Vertikalschnitt

Grundsatzdetail

F6105

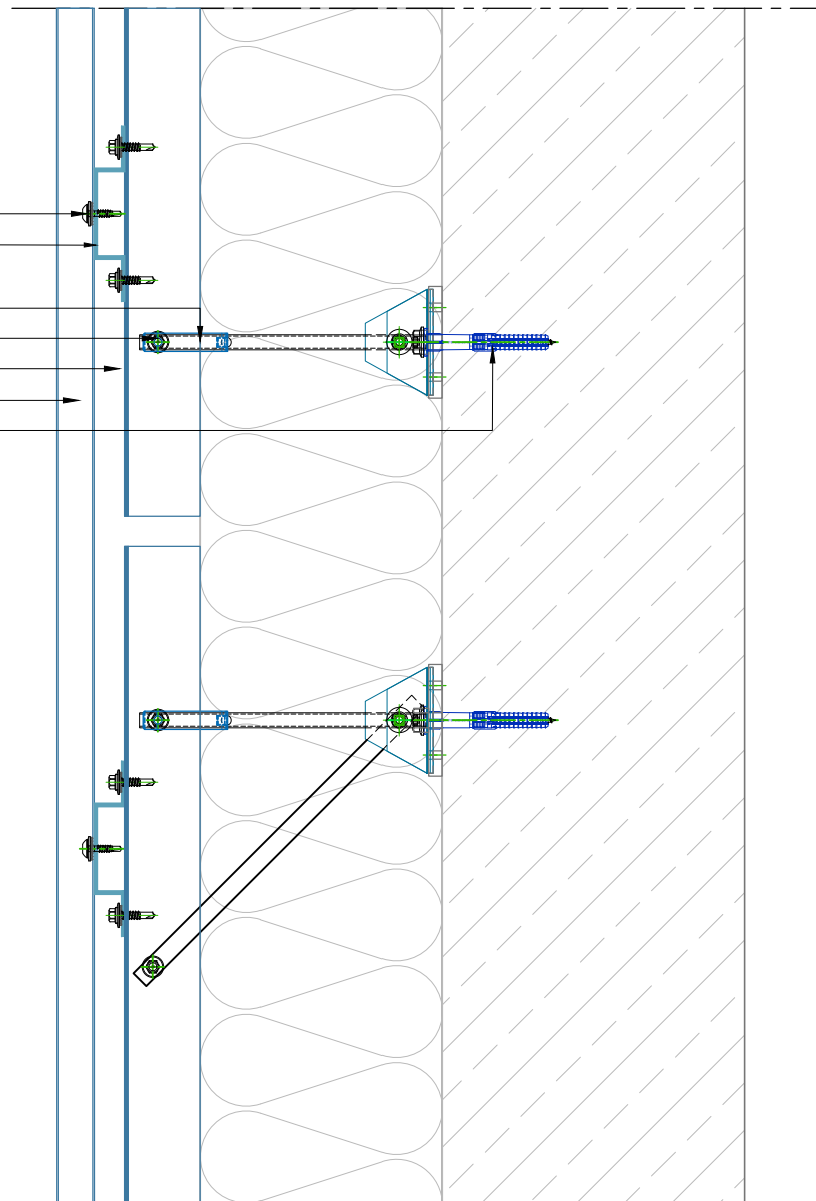
BEMO Systems GmbH
 Max-Eyth-Straße 2
 D-74532 Ilshofen-Eckartshausen
 Germany

T: +49(0)7904 29899-60
 F: +49(0)7904 29899-61
 E: sales@bemo.com
 W: www.bemo.com



Befestigungsmittel
Hutprofil

TEKOFIX-Konsole A++ mit Feder
Verbindungsmittel
Vertikales Tragprofil
Sonderprofil A
Verankerungsmittel



Bezeichnung:

Fassadenaufbau
Sonderprofil A, Verlegung vertikal

Typ:

Vertikalschnitt

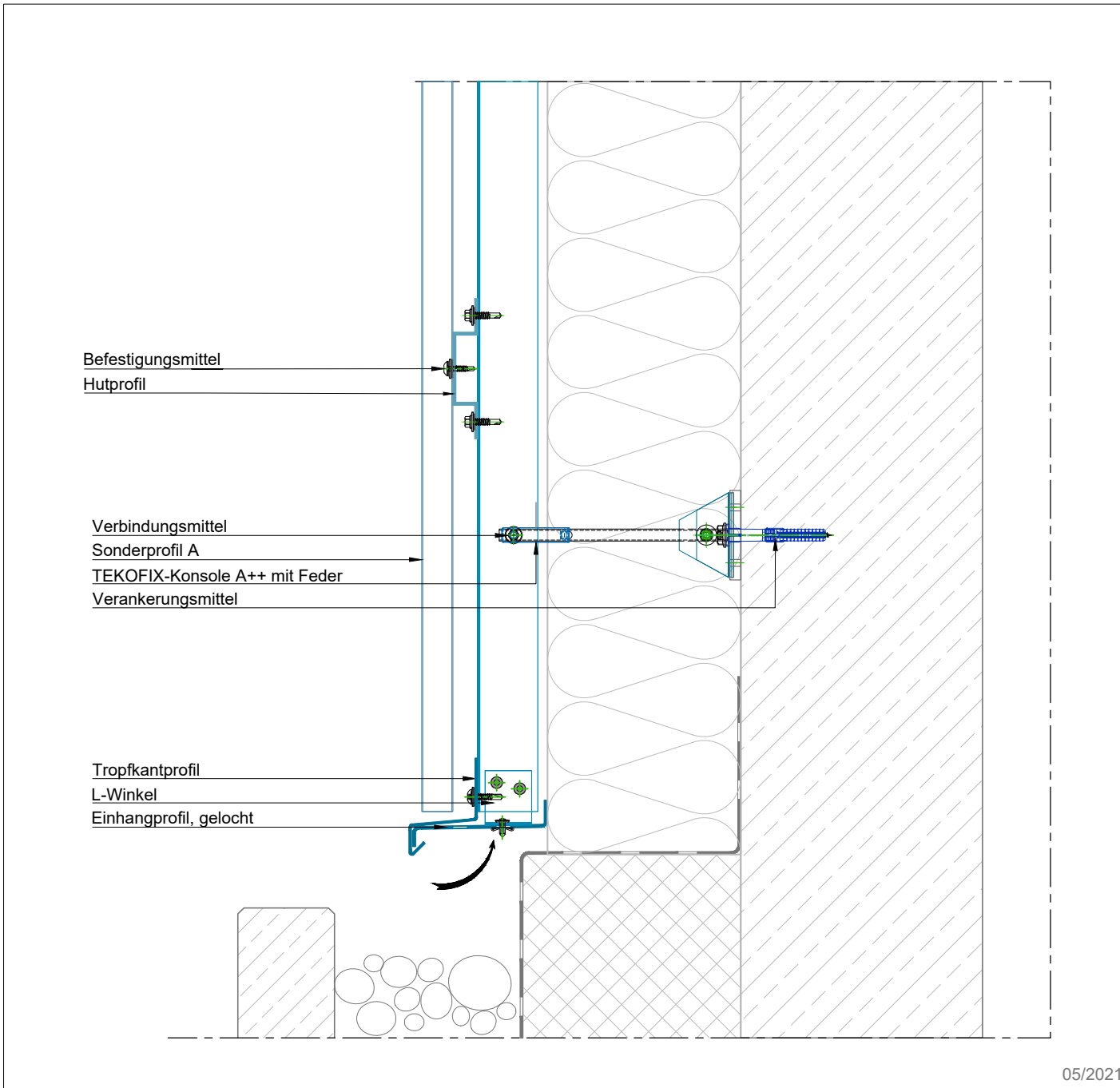
Grundsatzdetail

F6200

BEMO Systems GmbH
Max-Eyth-Straße 2
D-74532 Ilshofen-Eckartshausen
Germany

T: +49(0)7904 29899-60
F: +49(0)7904 29899-61
E: sales@bemo.com
W: www.bemo.com

Diese Zeichnung ist ausschließlich Eigentum der BEMO Systems GmbH. Ohne unsere vorherige Zustimmung darf sie weder vervielfältigt, noch Dritten zugänglich gemacht werden. Wir behalten uns alle Rechte vor, auch für den Fall der Patenterteilung oder der Gebrauchsmustererteilung. Die abgebildeten Konstruktionsdetails sind unverbindliche Lösungsvorschläge, die im einzelnen für jedes Projekt auf Anwendbarkeit und Richtigkeit geprüft werden müssen.



Bezeichnung:

Fassadenaufbau
Sonderprofil A, Verlegung vertikal

Typ:

Sockelausbildung Vertikalschnitt

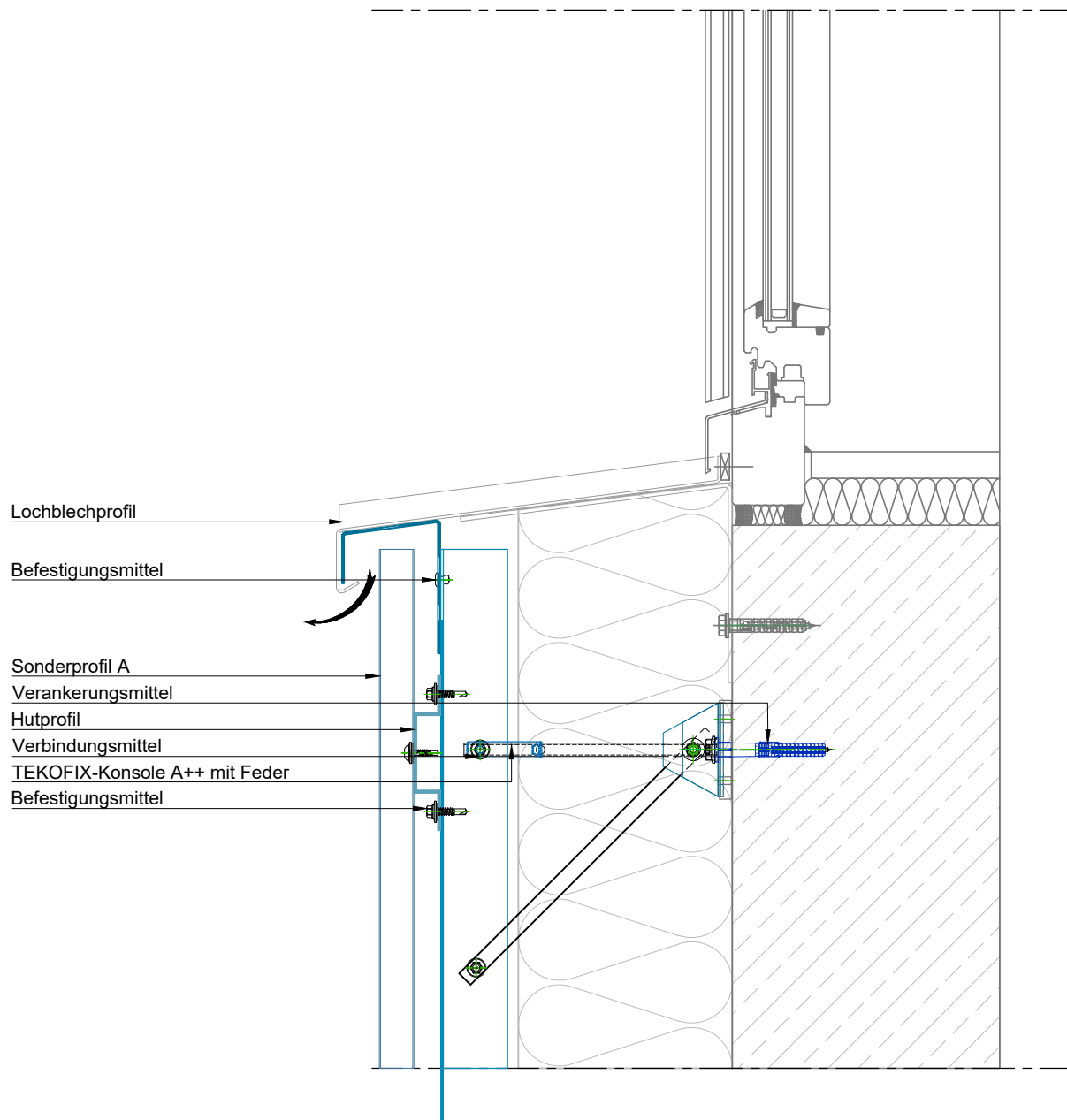
Grundsatzdetail

F6202

BEMO Systems GmbH
Max-Eyth-Straße 2
D-74532 Ilshofen-Eckartshausen
Germany

T: +49(0)7904 29899-60
F: +49(0)7904 29899-61
E: sales@bemo.com
W: www.bemo.com

Diese Zeichnung ist ausschließlich Eigentum der BEMO Systems GmbH. Ohne unsere vorherige Zustimmung darf sie weder vervielfältigt, noch Dritten zugänglich gemacht werden. Wir behalten uns alle Rechte vor, auch für den Fall der Patenterteilung oder der Gebrauchsmustererteilung. Die abgebildeten Konstruktionsdetails sind unverbindliche Lösungsvorschläge, die im einzelnen für jedes Projekt auf Anwendbarkeit und Richtigkeit geprüft werden müssen.



Bezeichnung:

Fassadenaufbau
Sonderprofil A, Verlegung vertikal

Typ:

Fensterausbildung unten Vertikalschnitt

Grundsatzdetail

F6203

BEMO Systems GmbH
Max-Eyth-Straße 2
D-74532 Ilshofen-Eckartshausen
Germany

T: +49(0)7904 29899-60
F: +49(0)7904 29899-61
E: sales@bemo.com
W: www.bemo.com

05/2021

Diese Zeichnung ist ausschließlich Eigentum der BEMO Systems GmbH. Ohne unsere vorherige Zustimmung darf sie weder vervielfältigt, noch Dritten zugänglich gemacht werden. Wir behalten uns alle Rechte vor, auch für den Fall der Patenterteilung oder der Gebrauchsmustererteilung. Die abgebildeten Konstruktionsdetails sind unverbindliche Lösungsvorschläge, die im einzelnen für jedes Projekt auf Anwendbarkeit und Richtigkeit geprüft werden müssen.



TEKOFIX-Konsole A++ mit Feder

Verbindungs-
mittel

Verankerungs-
mittel

Sonderprofil A

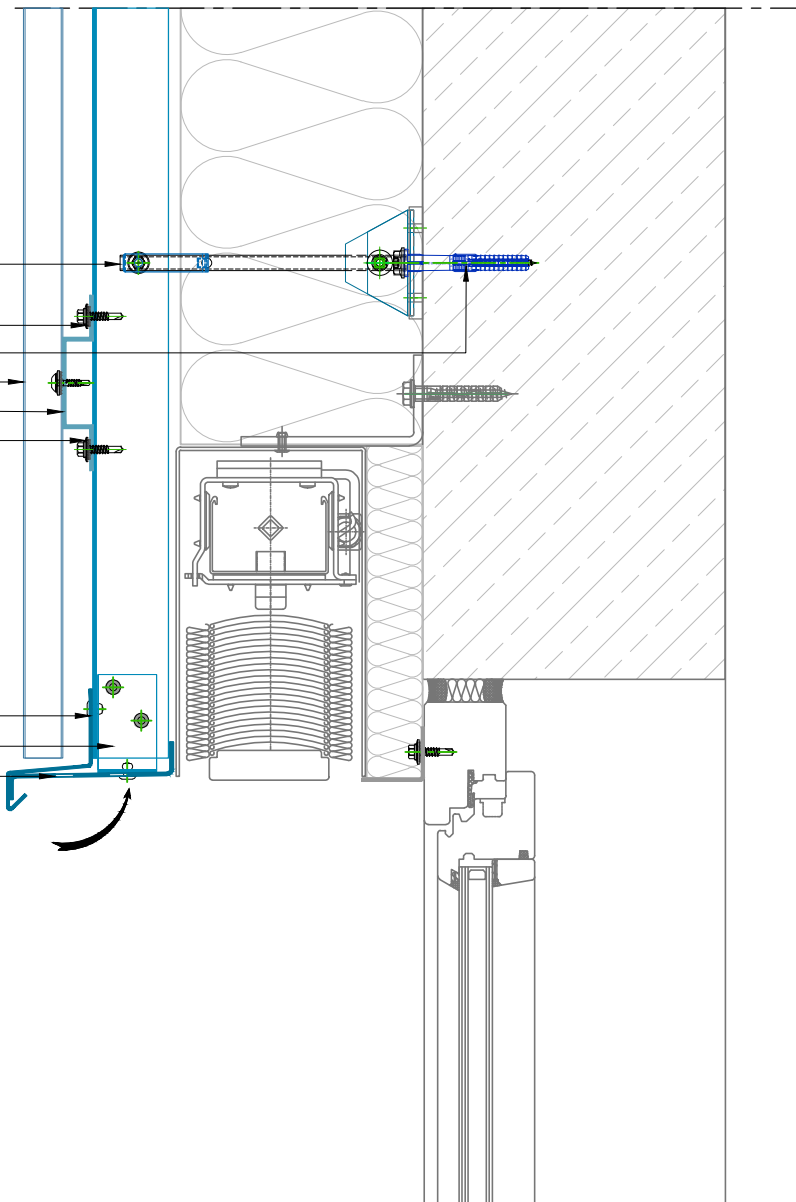
Hutprofil

Befestigungs-
mittel

Tropfkantprofil

L-Winkel

Einhangprofil, gelocht



Bezeichnung:

Fassadenaufbau

Sonderprofil A, Verlegung vertikal

Typ:

Fensterausbildung oben Vertikalschnitt

Grundsatzdetail

F6205

BEMO Systems GmbH
Max-Eyth-Straße 2
D-74532 Ilshofen-Eckartshausen
Germany

T: +49(0)7904 29899-60
F: +49(0)7904 29899-61
E: sales@bemo.com
W: www.bemo.com

For more information on our brochures
and data sheets, please visit our website at

www.bemo.com

For more information on BEMO-UNIKO
please visit us **[HERE](#)**.

BEMO SYSTEMS GmbH

Max-Eyth-Straße 2
74532 Ilshofen-Eckartshausen
Germany

T: +49 7904 29899 - 60

F: +49 7904 29899 - 61

E: sales@bemo.com

W: www.bemo.com